

KEY TO MATERIALS :-

1	Visqueen V8 Wall Membrane on Visqueen Anti Lime Coating.	5	GypLyner osa wall / ceiling lining system by others.
2	Visqueen CD Masonry Plug & CD Sealing Rope.	6	Proprietary screw tie by others.
3	Visqueen CD 150mm Corner Strip.		
4	Visqueen Liquid Gas Membrane.		

© Copyright reserved. This drawing may not be reproduced or amended without prior written permission.

Detail issued for Guidance Only. Designer's Approval Required.

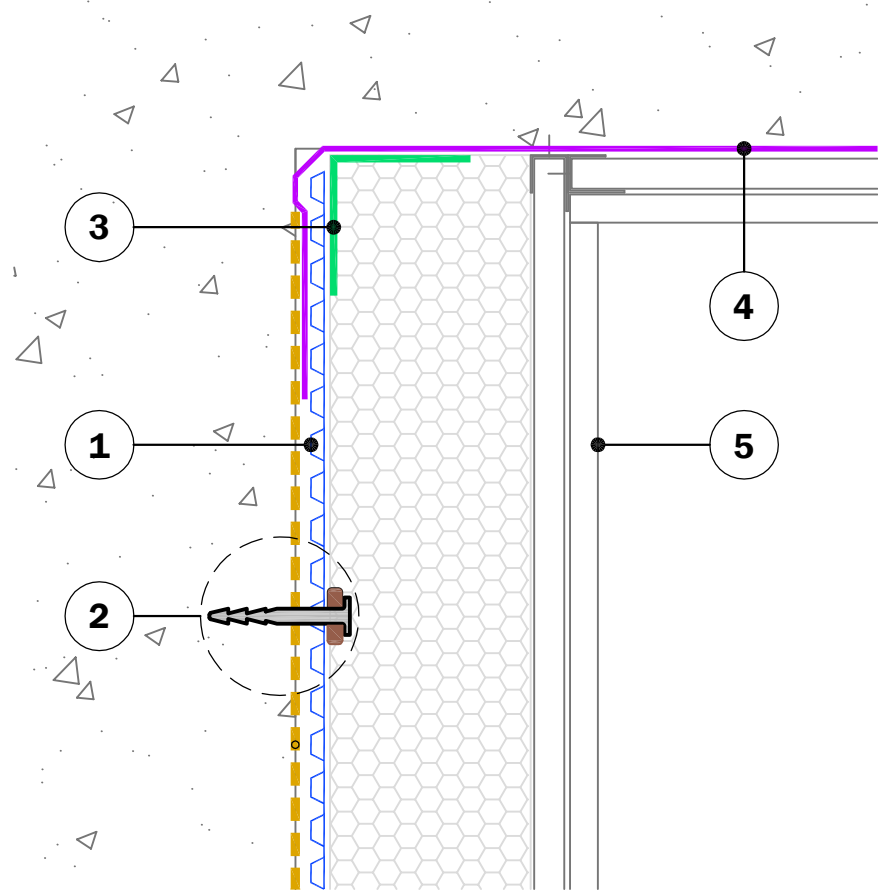
Site construction sequencing should be assessed before the appropriate Visqueen Standard Detail is selected & approved by the Designer.

In order to develop a robust design for protecting a structure against groundwater, a Risk Assessment must be carried out in line with the guidance given in BS8102:2009.

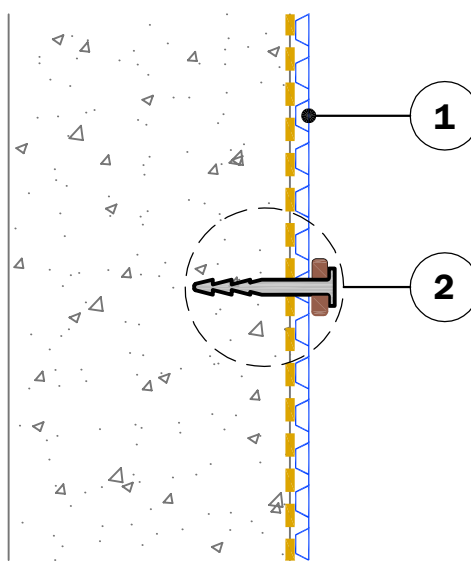
The Designer may need to specify one or a combination of waterproofing measures.

All Visqueen materials must be installed in strict accordance with the manufacturer's instructions. Refer to the current Visqueen datasheets.

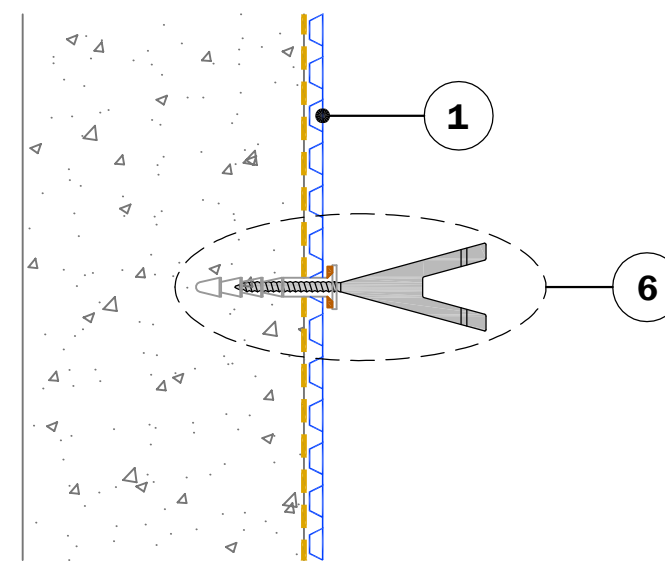
Do Not Scale - Use Figured Dimensions Only.



TYPICAL CONCRETE SOFFIT DETAIL



TYPICAL MASONRY PLUG DETAIL



TYPICAL SCREW TIE DETAIL

Standard Detail



www.visqueen.com

Scale : NTS

Date : May.2020

Drawing No : CD-01



CAVITY DRAIN MEMBRANE SYSTEM

Visqueen Cavity Drain Membrane System.

VISQUEEN
0333 202 6800
www.visqueen.com
enquiries@visqueen.com