

© Copyright reserved. This drawing may not be reproduced or amended without prior written permission.

Detail issued for Guidance Only. Designer's Approval Required.

Site construction sequencing should be assessed before the appropriate Visqueen Standard Detail is selected & approved by the Designer.

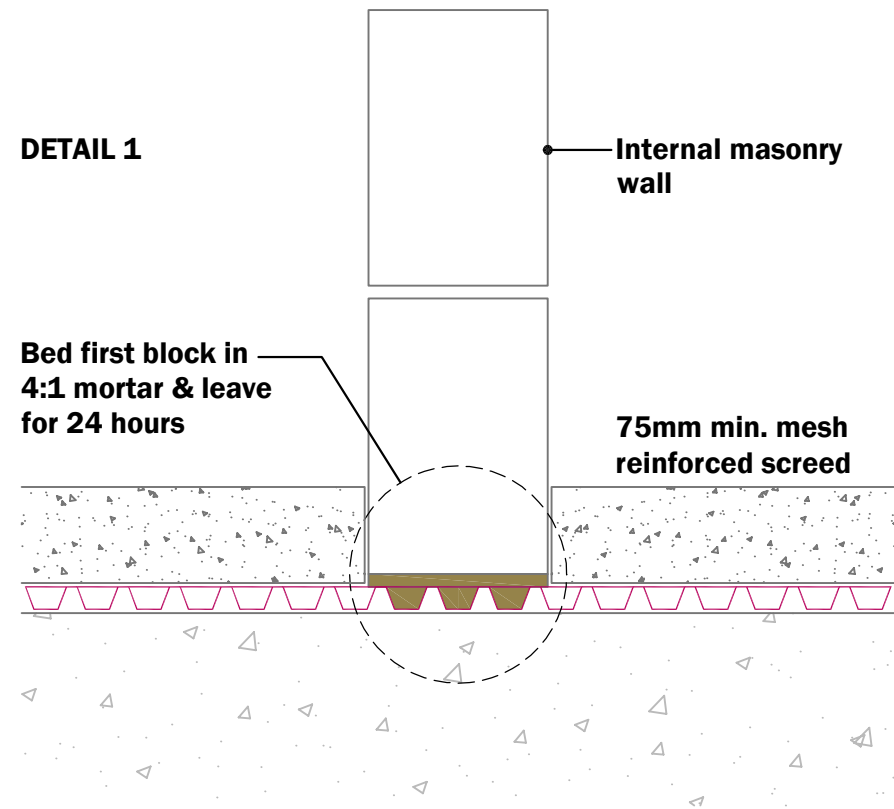
In order to develop a robust design for protecting a structure against groundwater, a Risk Assessment must be carried out in line with the guidance given in BS8102:2009.

The Designer may need to specify one or a combination of waterproofing measures.

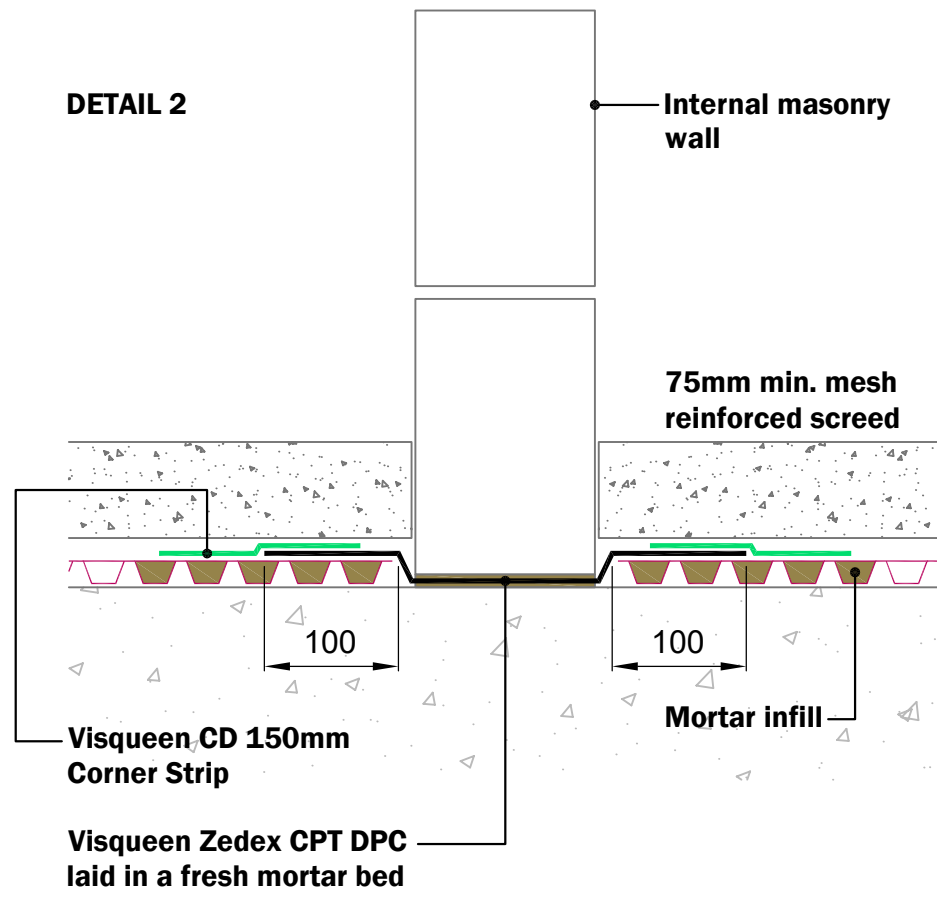
All Visqueen materials must be installed in strict accordance with the manufacturer's instructions. Refer to the current Visqueen datasheets.

Do Not Scale - Use Figured Dimensions Only.

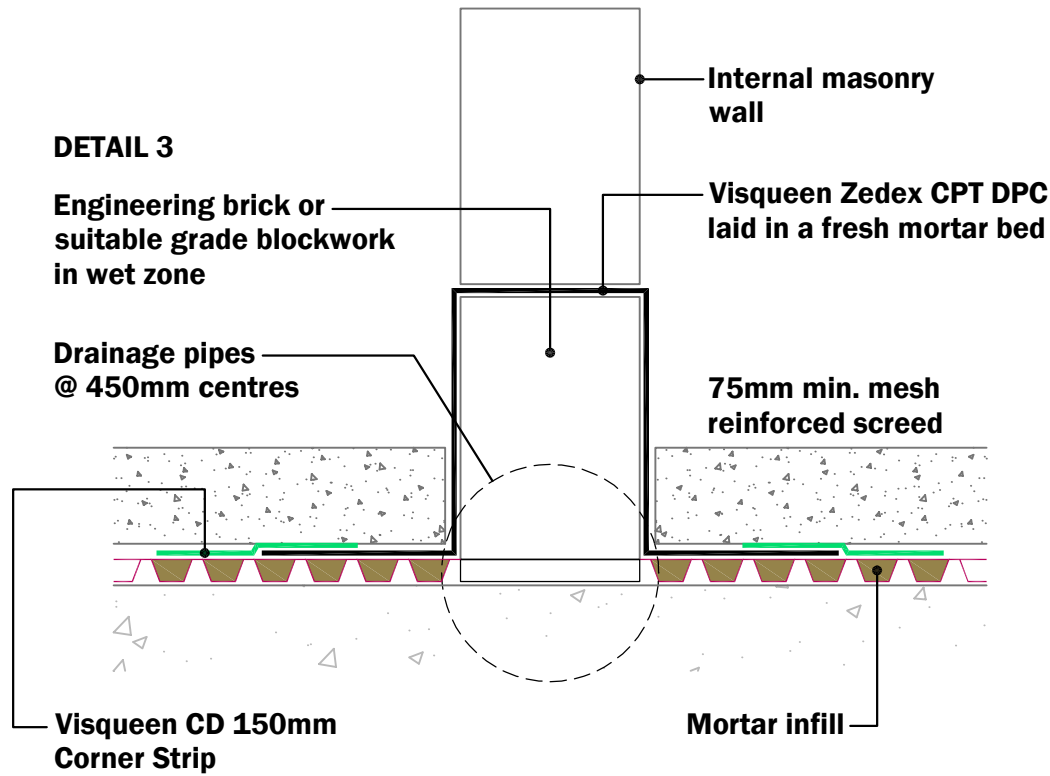
DETAIL 1



DETAIL 2



DETAIL 3



NB ; LOADING TBA BY ENGINEER & THIS APPLIES TO ALL DETAILS

## Standard Detail



[www.visqueen.com](http://www.visqueen.com)

Scale : NTS

Date : May.2020

Drawing No : CD-02

# VISQUEEN

## CAVITY DRAIN MEMBRANE SYSTEM

### Visqueen Cavity Drain Membrane System - Typical Internal Wall Details.

**VISQUEEN**  
0333 202 6800  
[www.visqueen.com](http://www.visqueen.com)  
[enquiries@visqueen.com](mailto:enquiries@visqueen.com)