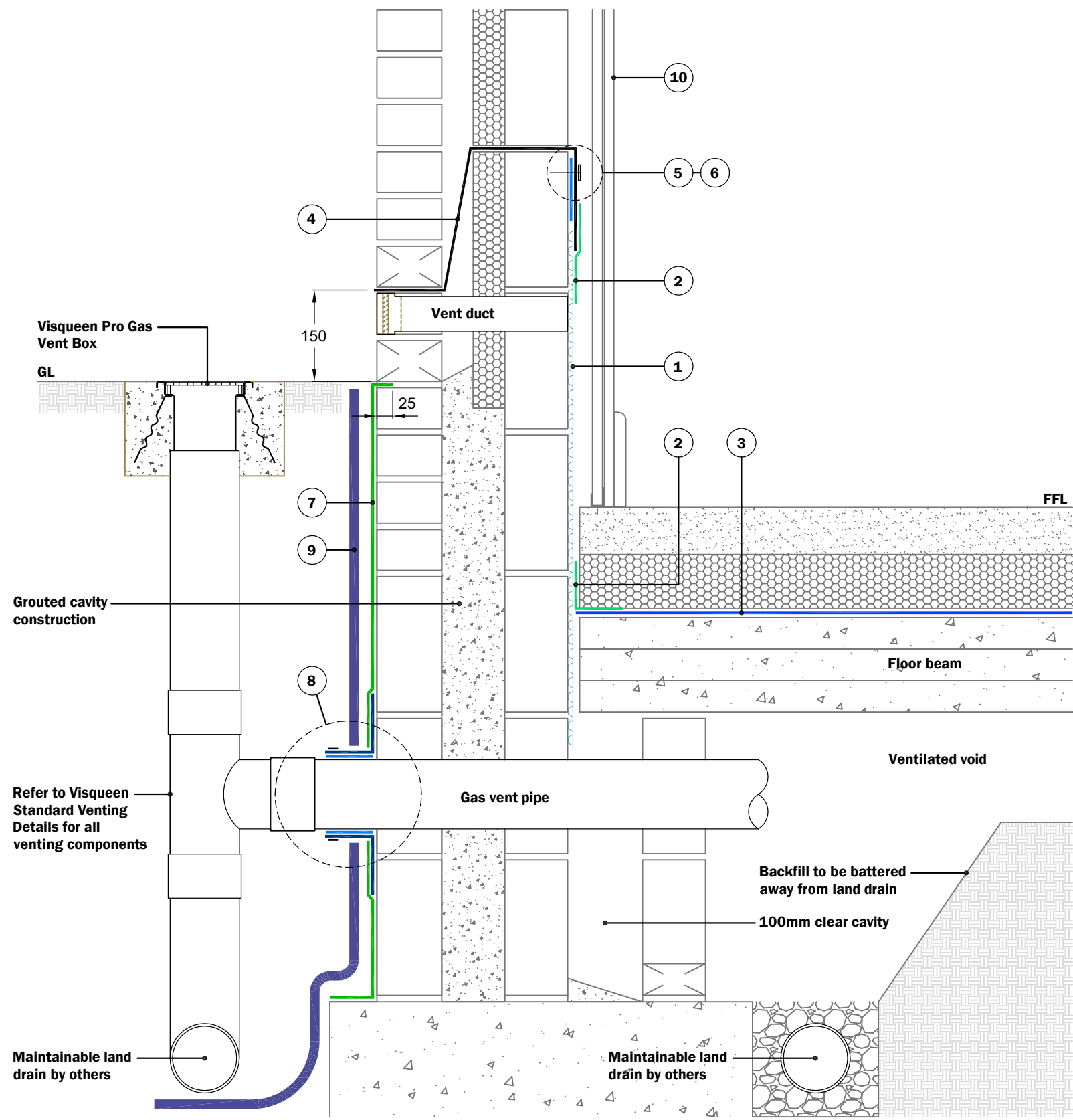


KEY TO MATERIALS :-

1	Visqueen V8 Wall Membrane on Visqueen Anti Lime Coating.
2	Visqueen CD 150mm Corner Strip.
3	Visqueen Gas Barrier.
4	Visqueen Zedex CPT DPC cavity tray.
5	Visqueen Ultimate Double Sided Tape.
6	Visqueen DPC Surface Fixing System.
7	Visqueen GR Self Adhesive Membrane (GR SAM) on Visqueen HP Tanking Primer.
8	Visqueen Ultimate Preformed Top Hat.
9	Visqueen Protect&Drain.
10	GypLyner osa wall lining system by others.



© Copyright reserved. This drawing may not be reproduced or amended without prior written permission.

Detail issued for Guidance Only. Designer's Approval Required.

Site construction sequencing should be assessed before the appropriate Visqueen Standard Detail is selected & approved by the Designer.

In order to develop a robust design for protecting a structure against groundwater, a Risk Assessment must be carried out in line with the guidance given in BS8102:2009.

The Designer may need to specify one or a combination of waterproofing measures.

All Visqueen materials must be installed in strict accordance with the manufacturer's instructions. Refer to the current Visqueen datasheets.

Do Not Scale - Use Figured Dimensions Only.

Standard Detail



www.visqueen.com

Scale : NTS

Date : May.2020

Drawing No : CD-06



Visqueen Cavity Drain Membrane System - Typical Perimeter Detail 1.

VISQUEEN
 0333 202 6800
www.visqueen.com
enquiries@visqueen.com