

© Copyright reserved. This drawing may not be reproduced or amended without prior written permission.

Detail issued for guidance only. Designer's approval required.

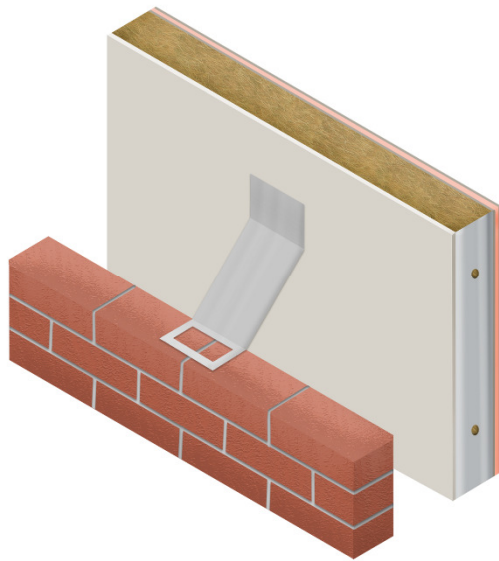
Site construction sequencing should be assessed before the appropriate Visqueen Standard Detail is selected and approved by the designer.

All Visqueen materials must be installed in strict accordance with the manufacturer's instructions. Refer to the current Visqueen datasheets.

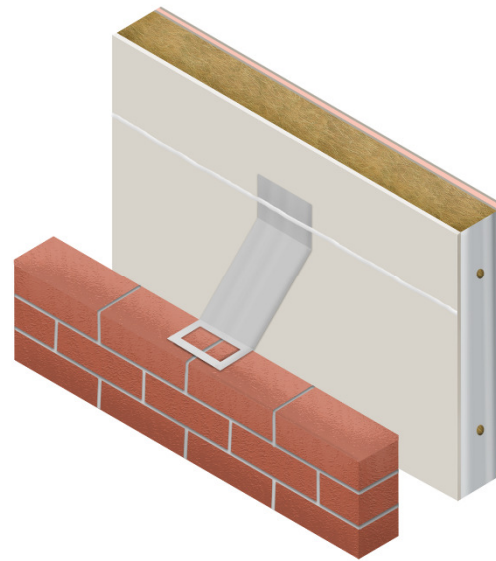
DPCs and DPC cavity trays to be installed in accordance with BS8215:1991 and PD6697:2019.

As standard, stainless steel Rigid Preformed Units and DPC Joint Supports are supplied without fixing holes and to BS EN 10088 grade 1.4301 (BS 1449 grade 304).

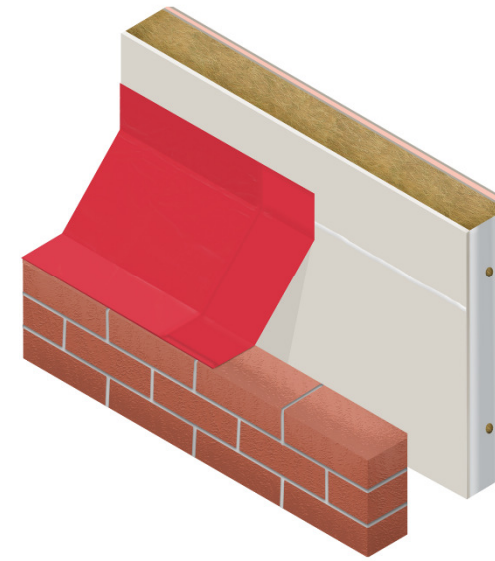
Do not scale, use figured dimensions only. All figured dimensions are in mm.



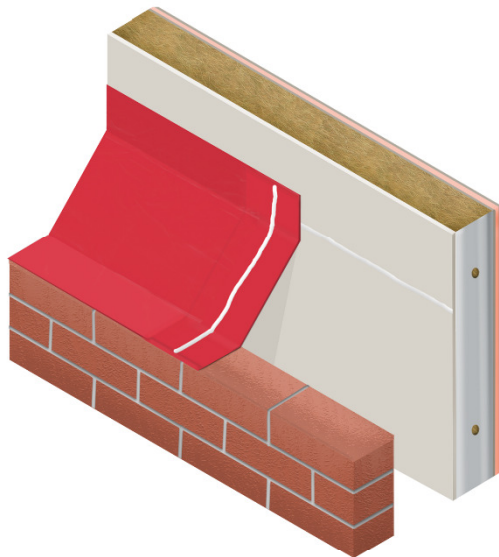
1. Secure Visqueen DPC Joint Support at lap joint location



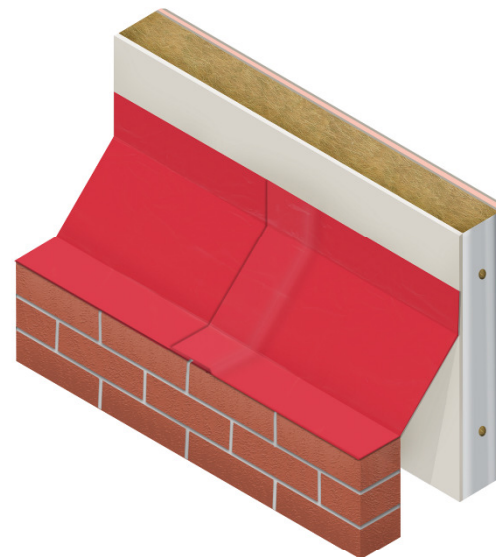
2. Apply Visqueen Zedex Mastic



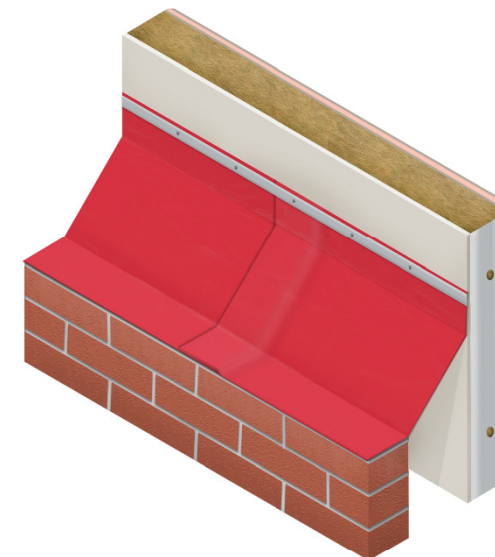
3. Install Visqueen Zedex Non-Combustible DPC cavity tray



4. Apply Visqueen Zedex Mastic



5. Install adjacent Visqueen Zedex Non-Combustible DPC cavity tray and seal lap



6. Install Visqueen Non-Combustible Fixing Strip and bed DPC in mortar

Standard Detail



www.visqueen.com

Drawing No : DPC-ZXNC-20

Scale : NTS

Date : March 2021

Revision Status : 0

VISQUEEN

ZEDEX
NON-COMBUSTIBLE DPC

**Cavity Tray Lap Joint and Cavity Tray
Surface Fixed Joint Formation**

VISQUEEN
0333 202 6800
www.visqueen.com
enquiries@visqueen.com