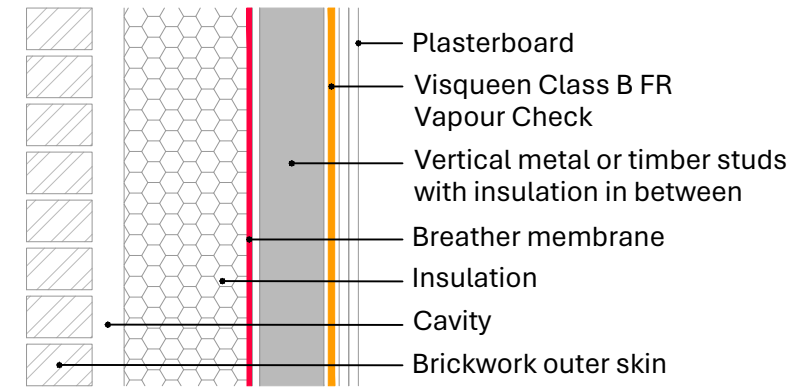
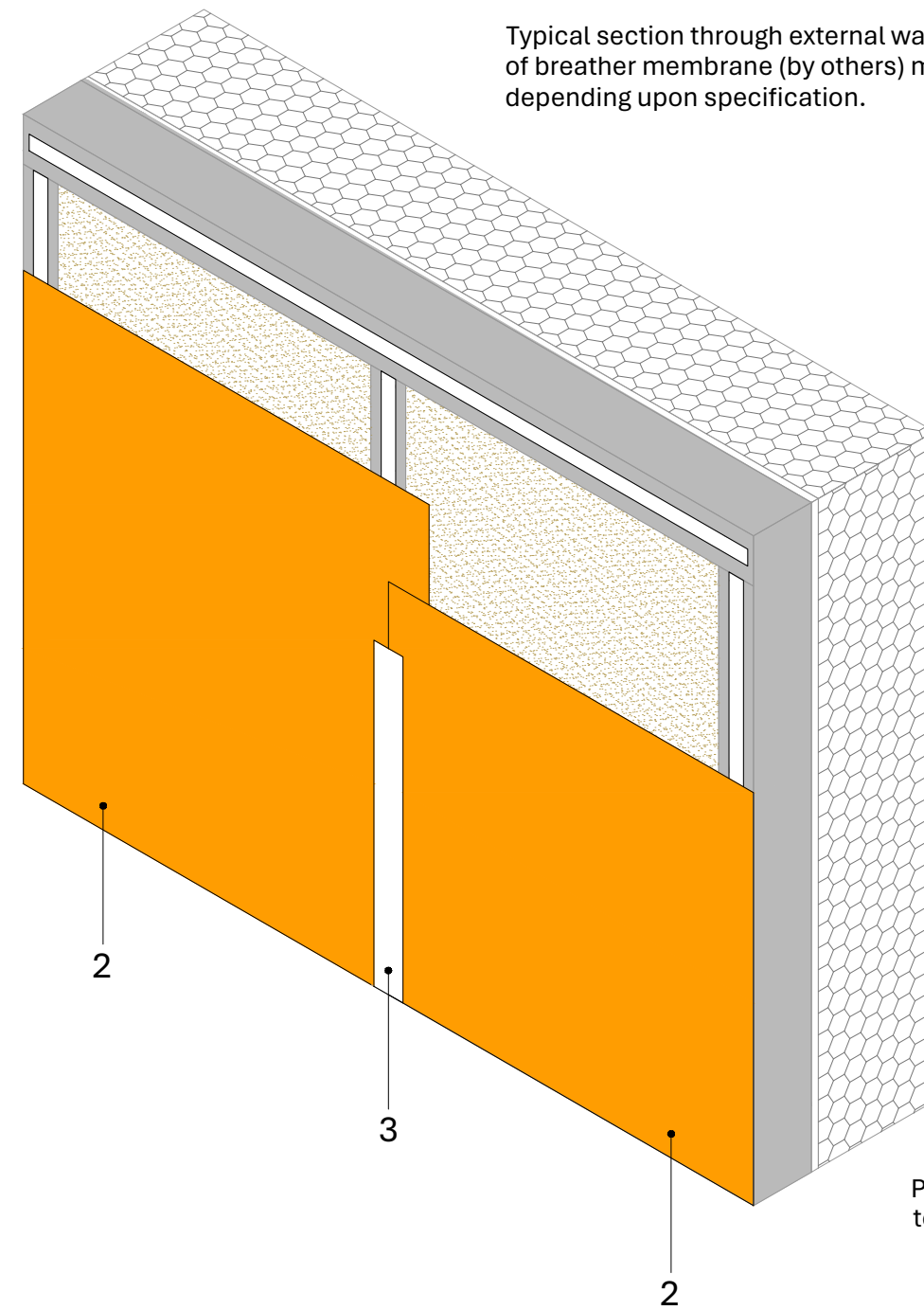
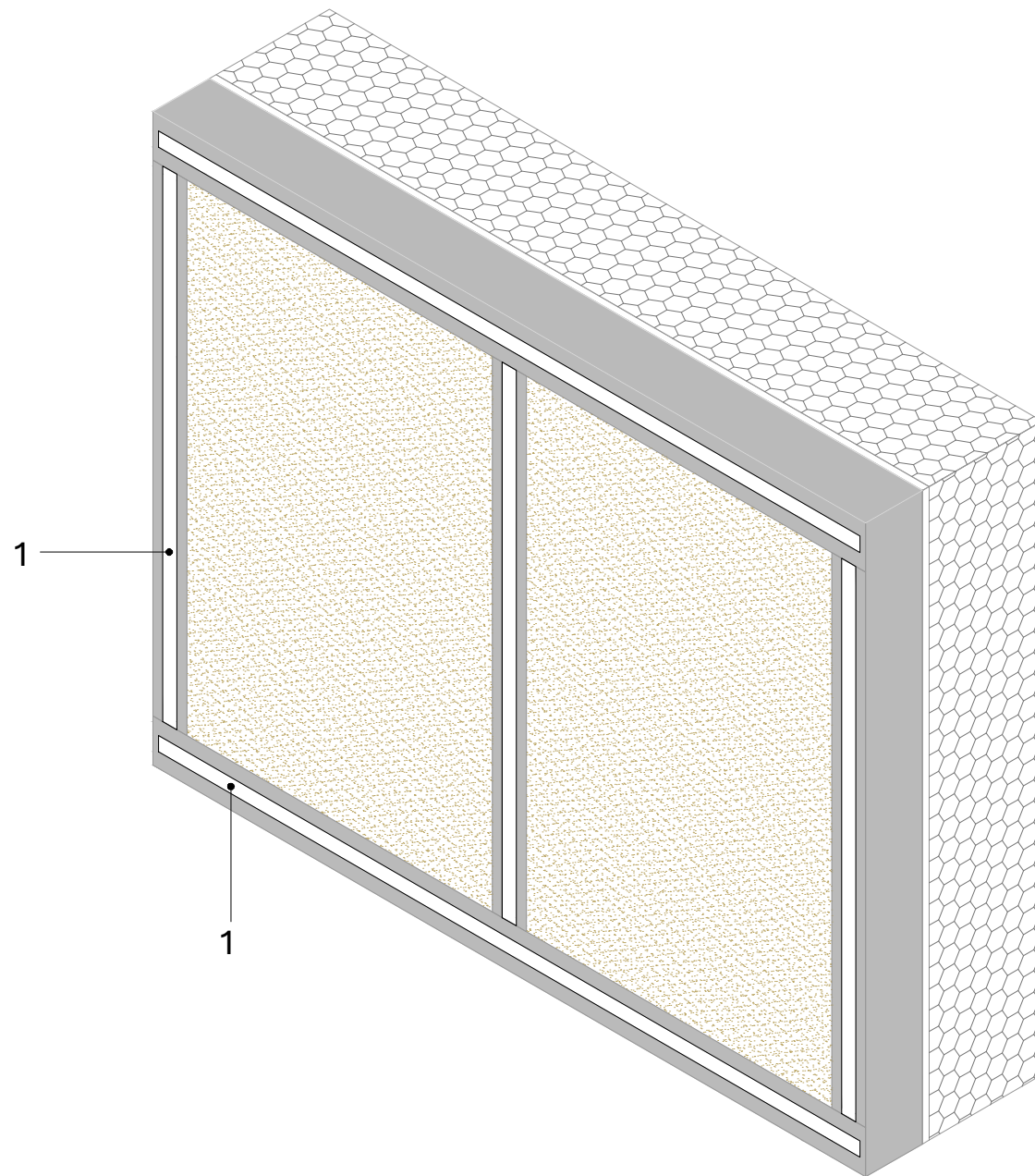


Key to materials:

1	Visqueen FR Double Sided Vapour Tape
2	Visqueen Class B FR Vapour Check
3	Visqueen FR Single Sided Vapour Tape



Typical section through external wall. Location of breather membrane (by others) may vary depending upon specification.



Partial installation shown to highlight lap

CRITICAL GUIDANCE NOTES

Visqueen Guidance Details are for illustration purposes only. It is the lead designer's responsibility to ensure Guidance Details are incorporated correctly into construction drawings.

Visqueen take no project design liability, or responsibility for the use of Guidance Details.

Drawing not to scale, use figured dimensions only. All figured dimensions are in millimetres.

British Standards are regularly updated. Visqueens' Guidance Details meet recommendations in place on date drawn.

For conformity with the reaction to fire classification, usage of Visqueen FR Double Sided Vapour Tape must not exceed 11% of the area of the Visqueen Class B FR Vapour Check.

For conformity with the reaction to fire classification, usage of Visqueen FR Single Sided Vapour Tape must not exceed 11% of the area of the Visqueen Class B FR Vapour Check.

Visqueen AVCLs require permanent mechanical fixing normally achieved by over-boarding the AVCL with a plasterboard or other construction board.

Contact Visqueen Technical Services for further information.

Guidance Detail

Drawing No: FRVC-01

Drawn by: JR

Approved: SD

Date drawn: September 2024

Visqueen provide a Contract Design Service where project specific drawings can be produced. Contact Visqueen Technical Services for further information.



Tel: 0333 202 6800
 enquiries@visqueen.com
 www.visqueen.com



VISQUEEN CLASS B FR VAPOUR CHECK TYPICAL INSTALLATION

© Copyright reserved. This drawing may not be reproduced in part or amended without prior written permission.

