

KEY TO MATERIALS :-

1	Visqueen Zedex CPT DPC.
2	Visqueen GR DPC.
3	Visqueen Gas Barrier.
4	Visqueen Double Sided Tape (10m x 50mm).
5	Visqueen Gas Resistant Foil Tape.
6	Visqueen Vapour Barrier or HP Vapour Barrier.
7	Rigid insulation by others to support gas DPC.

© Copyright reserved. This drawing may not be reproduced or amended without prior written permission.

Detail issued for Guidance Only. Designer's Approval Required.

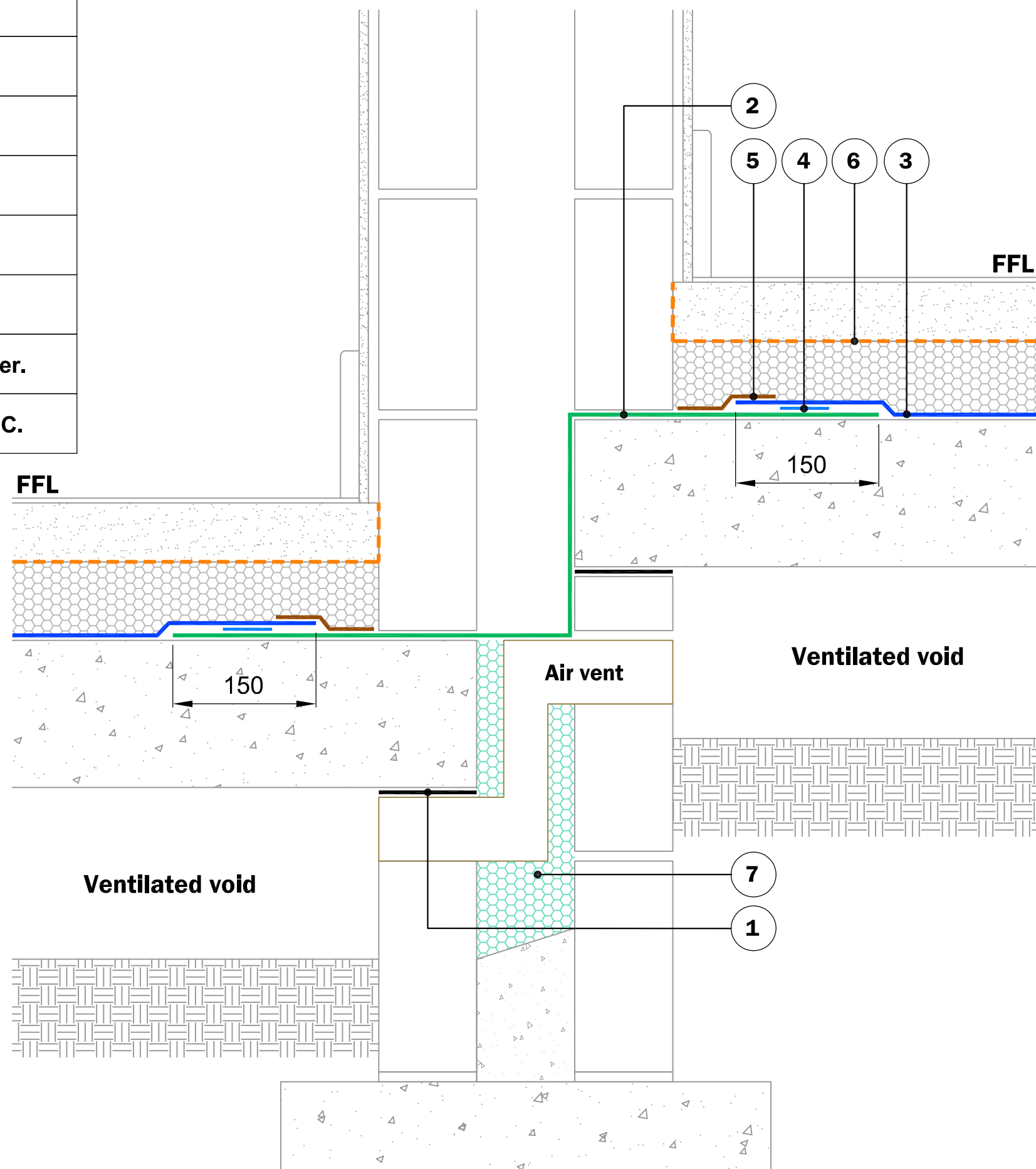
Site construction sequencing should be assessed before the appropriate Visqueen Standard Detail is selected & approved by the Designer.

In order to develop a robust design for protecting a structure against groundwater, a Risk Assessment must be carried out in line with the guidance given in BS8102:2009.

The Designer may need to specify one or a combination of waterproofing measures.

All Visqueen materials must be installed in strict accordance with the manufacturer's instructions. Refer to the current Visqueen datasheets.

Do Not Scale - Use Figured Dimensions Only.



Important Note :-

All cavity work above DPC must be kept clear from any mortar droppings by use of a cavity drip batten, full-fill insulation or regular careful cleaning of cavities, avoiding damage to the DPC

Standard Detail



www.visqueen.com

Scale : NTS

Date : Dec.2018

Drawing No : GB-07



**Typical Stepped Slab Detail
(Gas Protection Only - Not Tanking).**

VISQUEEN
0333 202 6800
www.visqueen.com
enquiries@visqueen.com