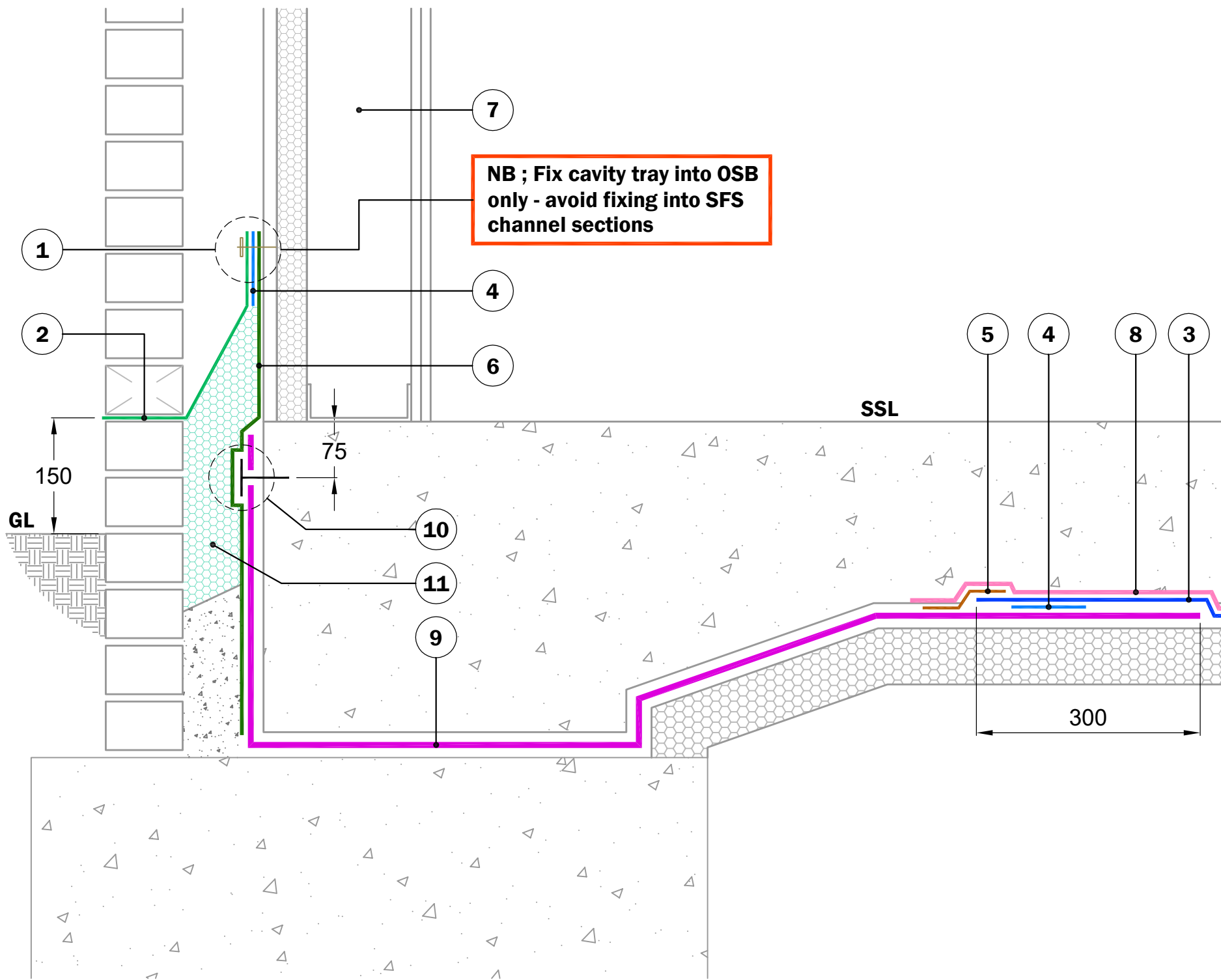


KEY TO MATERIALS :-

1	Visqueen Fixing Strip System with suitable fixings.
2	Visqueen GR DPC.
3	Visqueen Gas Barrier.
4	Visqueen Ultimate Double Sided Tape.
5	Visqueen Ultimate Lap Tape.
6	Visqueen GR SAM on Visqueen HP Tanking Primer.
7	SFS to specialist's details.
8	Visqueen TreadGUARD 1500.
9	Visqueen Ultimate GeoSeal.
10	Visqueen Retaining Discs @ 400mm centres.
11	Rigid insulation by others to support gas DPC.



© Copyright reserved. This drawing may not be reproduced or amended without prior written permission.

Detail issued for Guidance Only. Designer's Approval Required.

Site construction sequencing should be assessed before the appropriate Visqueen Standard Detail is selected & approved by the Designer.

In order to develop a robust design for protecting a structure against groundwater, a Risk Assessment must be carried out in line with the guidance given in BS8102:2009.

The Designer may need to specify one or a combination of waterproofing measures.

All Visqueen materials must be installed in strict accordance with the manufacturer's instructions. Refer to the current Visqueen datasheets.

Do Not Scale - Use Figured Dimensions Only.

Standard Detail



www.visqueen.com

Scale : NTS

Date : Dec.2019

Drawing No : GB-29



Typical Slab Edge Combi Detail 3 (Masonry Outer / SFS Inner Skin).

VISQUEEN
 0333 202 6800
www.visqueen.com
enquiries@visqueen.com