

KEY TO MATERIALS :-

1	Visqueen Ultimate Preformed Top Hat.
2	Jubilee clip.
3	Visqueen Gas Barrier.
4	Visqueen Double Sided Tape.
5	Visqueen Gas Resistant Foil Tape.
6	Visqueen Vapour Barrier or HP Vapour Barrier.
7	Visqueen TreadGUARD 300 or 1500.

© Copyright reserved. This drawing may not be reproduced or amended without prior written permission.

Detail issued for guidance only. Designer's approval required.

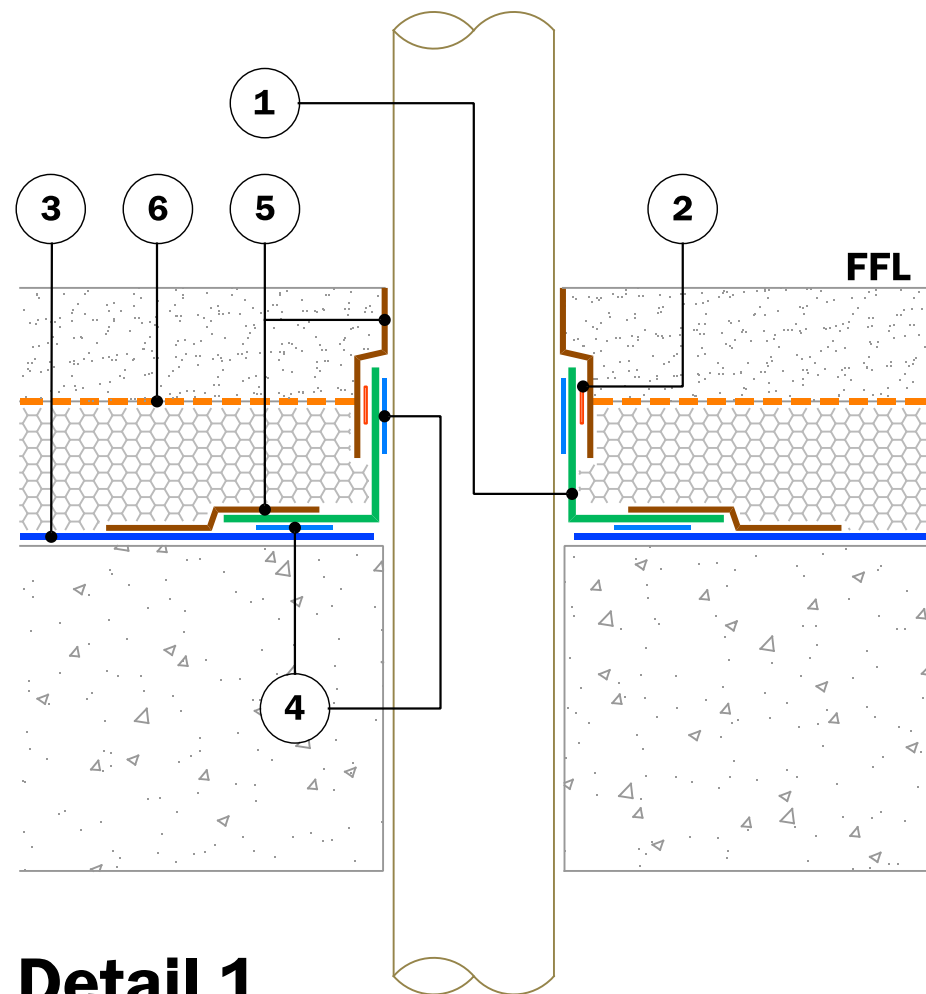
Site construction sequencing should be assessed before the appropriate Visqueen Standard Detail is selected & approved by the designer.

DPCs and DPC cavity trays to be installed in accordance with BS8215:1991 and PD6697:2019.

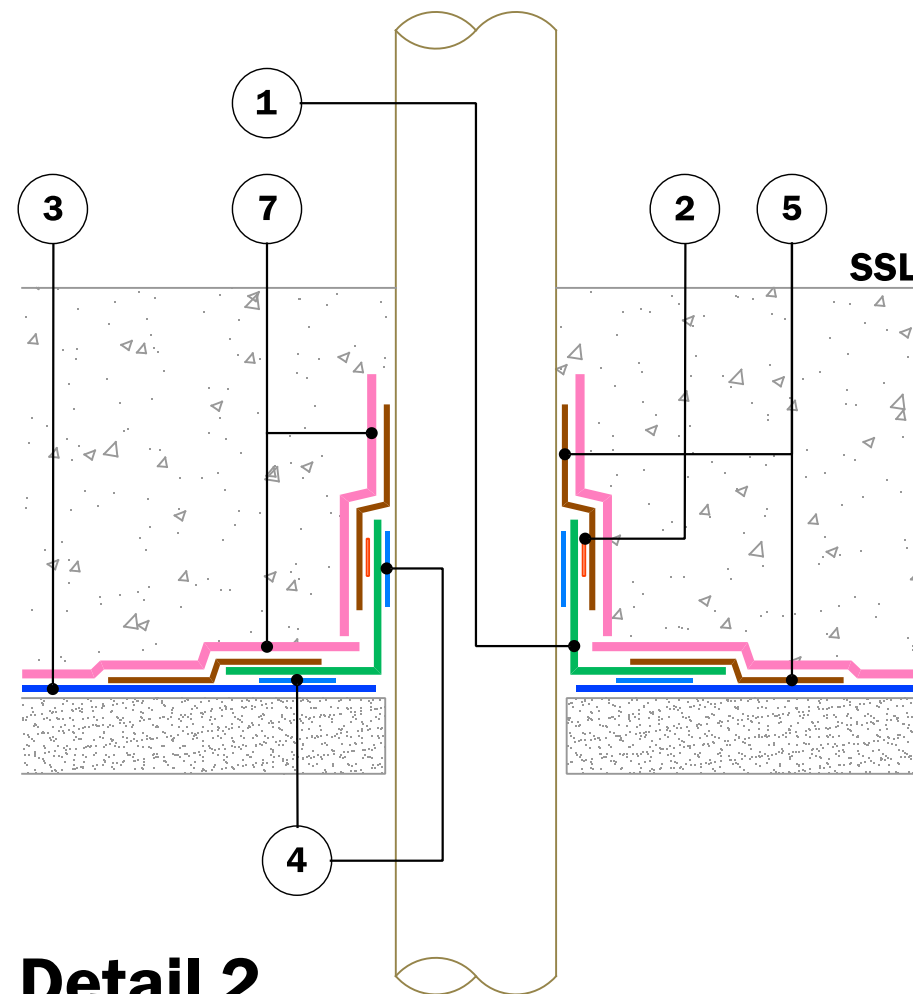
All Visqueen materials must be installed in strict accordance with the manufacturer's instructions. Refer to the current Visqueen datasheets.

Do not scale, use figured dimensions only. All figured dimensions are in mm.

For Visqueen Preformed Top Hats see Visqueen Standard Details PFU-203 & 204.



Detail 1



Detail 2

(Revision: Berry UK Design Centre)

Standard Detail



www.visqueen.com

Scale : NTS

Date : March 2022

Drawing No : GB-51



Typical Pipe Sleeve Details (Top Hat).

VISQUEEN
 0333 202 6800
www.visqueen.com
enquiries@visqueen.com