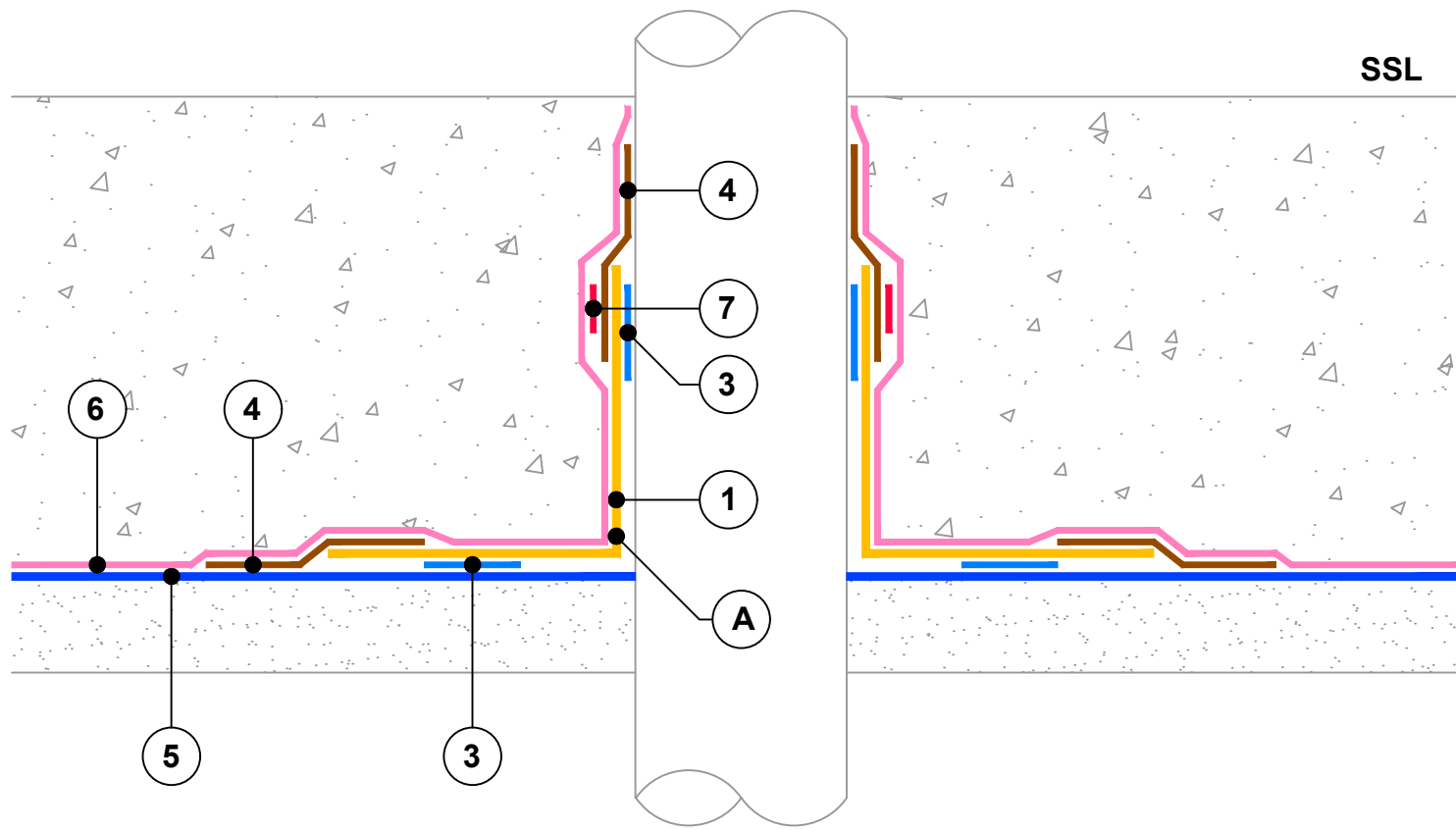
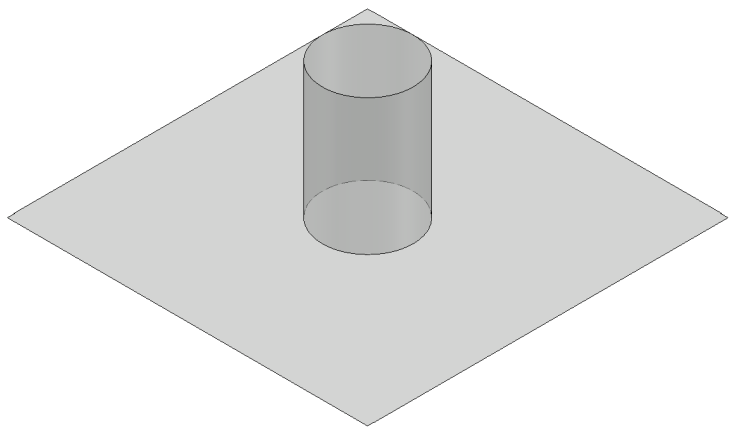
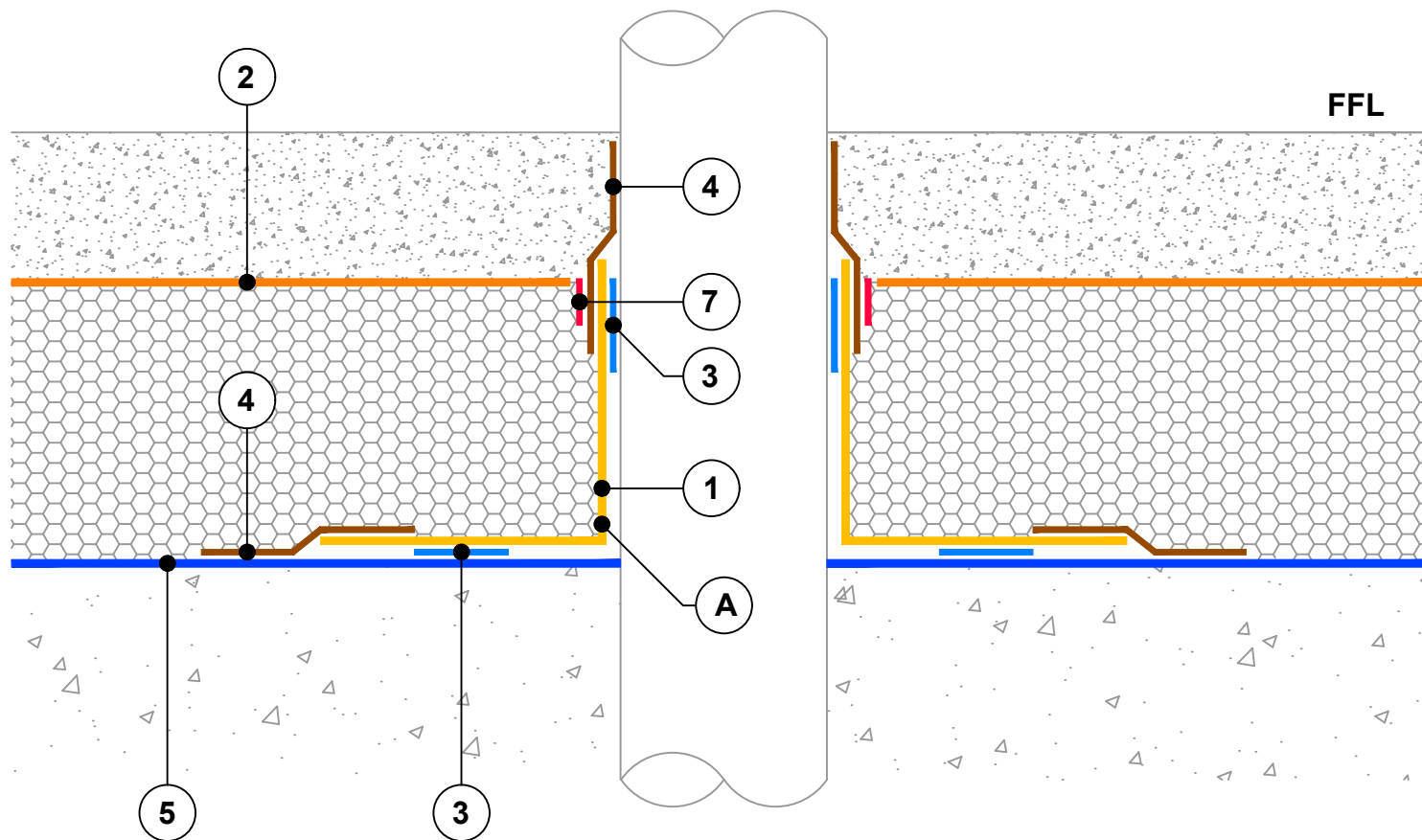


**Key to materials:**

1	Visqueen Ultimate Preformed Pipe Sleeve (Top Hat)
2	Visqueen Vapour Check or Visqueen Vapour Barrier
3	VisqueenPro Double Sided Jointing Tape
4	Visqueen Gas Resistant Foil Lap Tape
5	Visqueen Gas Barrier
6	Visqueen TreadGUARD
7	Jubilee clip
A	PFU-203 Preformed Pipe Sleeve



**Section View**



**CRITICAL GUIDANCE NOTES**

Visqueen Guidance Details are for illustration purposes only. It is the lead designer's responsibility to ensure Guidance Details are incorporated correctly into construction drawings.

Visqueen take no project design liability, or responsibility for the use of Guidance Details. Visqueen have no control over the situation in which the products are installed. Visqueen provide a Contract Design Service where project specific drawings can be produced. Contact Visqueen Technical Services for further information.

Site construction sequencing should be assessed before the appropriate Guidance Detail is selected and approved by the lead designer.

All Visqueen materials must be installed in strict accordance with the Visqueen Product Datasheets and applicable third party certificates.

Radon protection in accordance with national building regulations and BR211:2023.

Ground gas protection in accordance with BS 8485:2015 + A1:2019.

Visqueen air and vapour control layers (AVCLs) should be installed in accordance with the recommendations of BS 5250:2021.

Drawing not to scale, use figured dimensions only. All figured dimensions are in millimetres.

**Guidance Detail**

Date: November 2023

Drawing No: GB-51

Revision: A

Drawn by: JR

Approved by: SD


 Tel: 0333 202 6800  
 enquiries@visqueen.com  
 www.visqueen.com

© Copyright reserved. This drawing may not be reproduced or amended without prior written permission.



**BARRIER BELOW & ABOVE SLAB  
PIPE SLEEVE DETAILS**