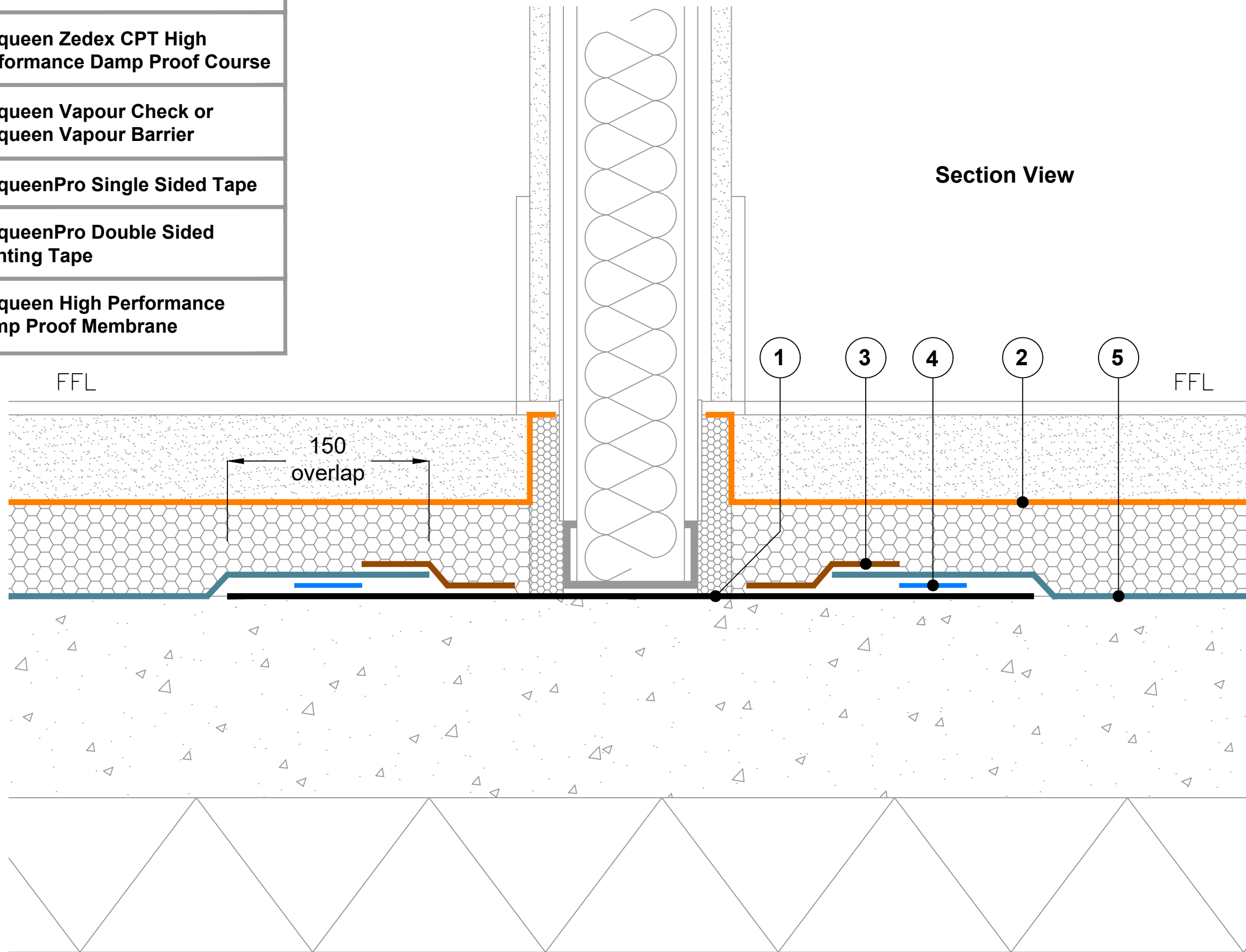


Key to materials:

| | |
|---|---|
| 1 | Visqueen Zedex CPT High Performance Damp Proof Course |
| 2 | Visqueen Vapour Check or Visqueen Vapour Barrier |
| 3 | VisqueenPro Single Sided Tape |
| 4 | VisqueenPro Double Sided Jointing Tape |
| 5 | Visqueen High Performance Damp Proof Membrane |



Visqueen Standard Details provide generic guidance only and designer's approval is required. These should not be used as construction drawings.

Site construction sequencing should be assessed before the appropriate Visqueen Standard Detail is selected and approved by the designer.

DPCs and DPC cavity trays to be installed in accordance with BS 8215:1991, PD 6697:2019 and BS 8000-3:2020.

All Visqueen materials must be installed in strict accordance with the Visqueen product datasheets and applicable 3rd party certificates.

Visqueen air and vapour control layers (AVCLs) should be installed in accordance with the recommendations of BS 5250:2021 Management of moisture in buildings - code of practice.

Drawing not to scale, use figured dimensions only. All figured dimensions are in millimetres.

Standard Detail



www.visqueen.com

Date: Apr 2023

Drawing No: HP DPM-26

Revision: Drawn by: JR

Tel: 0333 202 6800
enquiries@visqueen.com

© Copyright reserved. This drawing may not be reproduced or amended without prior written permission.



DPM BELOW INSULATION, CAST IN SITU RC GROUND BEARING SLAB & INTERNAL NON LOAD-BEARING LIGHT GAUGE STEEL FRAME WALL