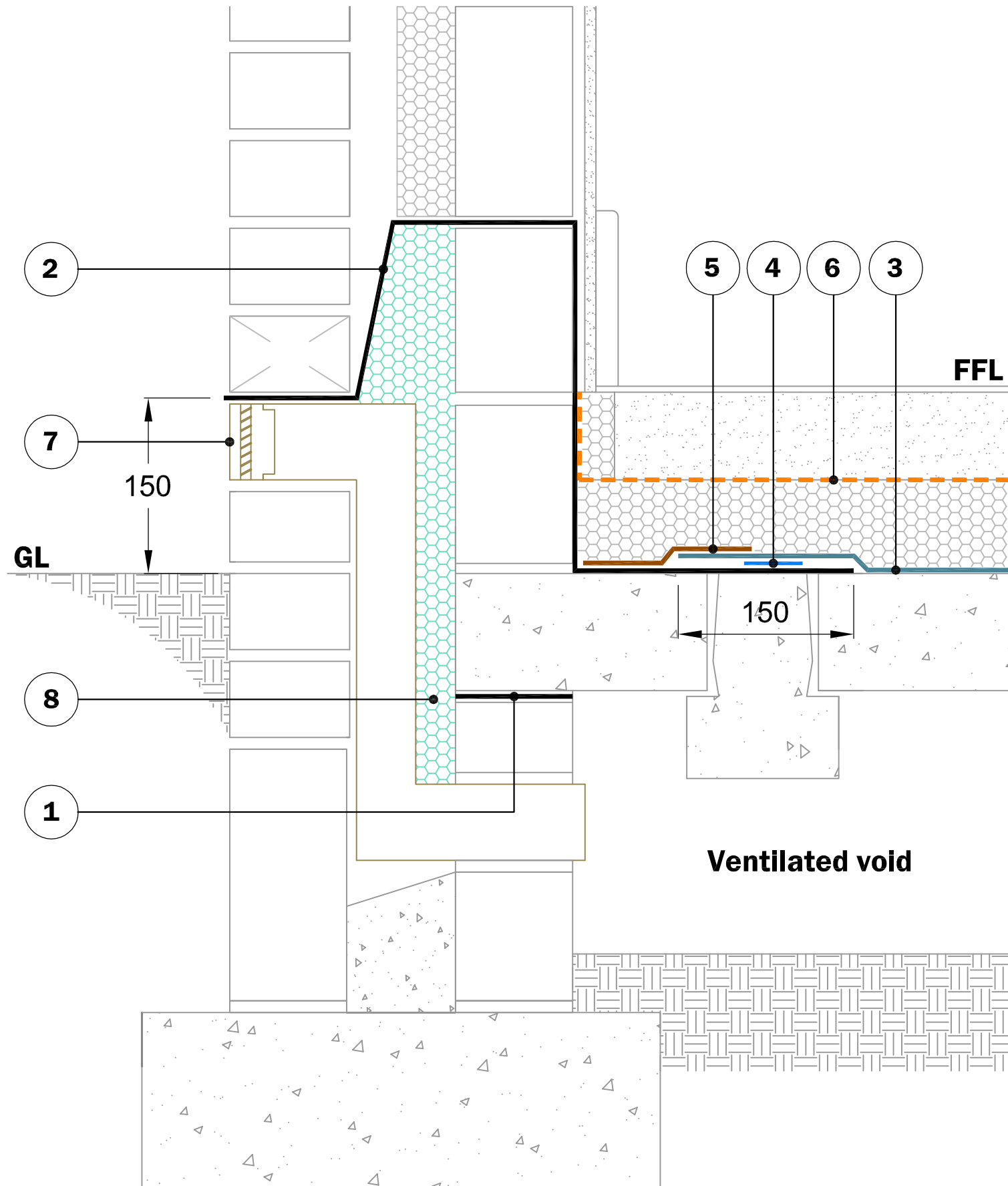


KEY TO MATERIALS :-

| | |
|---|---|
| 1 | Visqueen Zedex CPT DPC. |
| 2 | Visqueen Zedex CPT DPC. |
| 3 | Visqueen High Performance DPM. |
| 4 | Visqueen Double Sided Tape (10m x 50mm). |
| 5 | Visqueen Pro Single Sided Tape. |
| 6 | Visqueen Vapour Barrier or HP Vapour Barrier. |
| 7 | Visqueen Adjustable Z Vent & Air Brick. |
| 8 | Rigid insulation by others to support DPC. |

Important Note :-
 Visqueen Preformed Corner Cloaks, Stop Ends & Threshold Cloaks must be used to ensure the integrity of the detail is maintained.



© Copyright reserved. This drawing may not be reproduced or amended without prior written permission.

Detail issued for Guidance Only. Designer's Approval Required.

Site construction sequencing should be assessed before the appropriate Visqueen Standard Detail is selected & approved by the Designer.

In order to develop a robust design for protecting a structure against groundwater, a Risk Assessment must be carried out in line with the guidance given in BS8102:2009.

The Designer may need to specify one or a combination of waterproofing measures.

All Visqueen materials must be installed in strict accordance with the manufacturer's instructions. Refer to the current Visqueen datasheets.

Do Not Scale - Use Figured Dimensions Only.

Standard Detail



www.visqueen.com

Scale : NTS

Date : Dec.2018

Drawing No : HP-03



Typical Edge Detail - Suspended Slab, Option 3.

VISQUEEN
 0333 202 6800
www.visqueen.com
enquiries@visqueen.com