

KEY TO MATERIALS :-

1	Visqueen V20 Cavity Drain Membrane on Visqueen Anti Lime Coating.
2	Visqueen V8 Wall Membrane on Visqueen Anti Lime Coating.
3	Visqueen Ultimate Preformed Top Hat.
4	Visqueen Double Sided Tape (10m x 50mm).
5	Visqueen Gas Resistant Foil Tape.
6	Jubilee clip.

© Copyright reserved. This drawing may not be reproduced or amended without prior written permission.

Detail issued for Guidance Only. Designer's Approval Required.

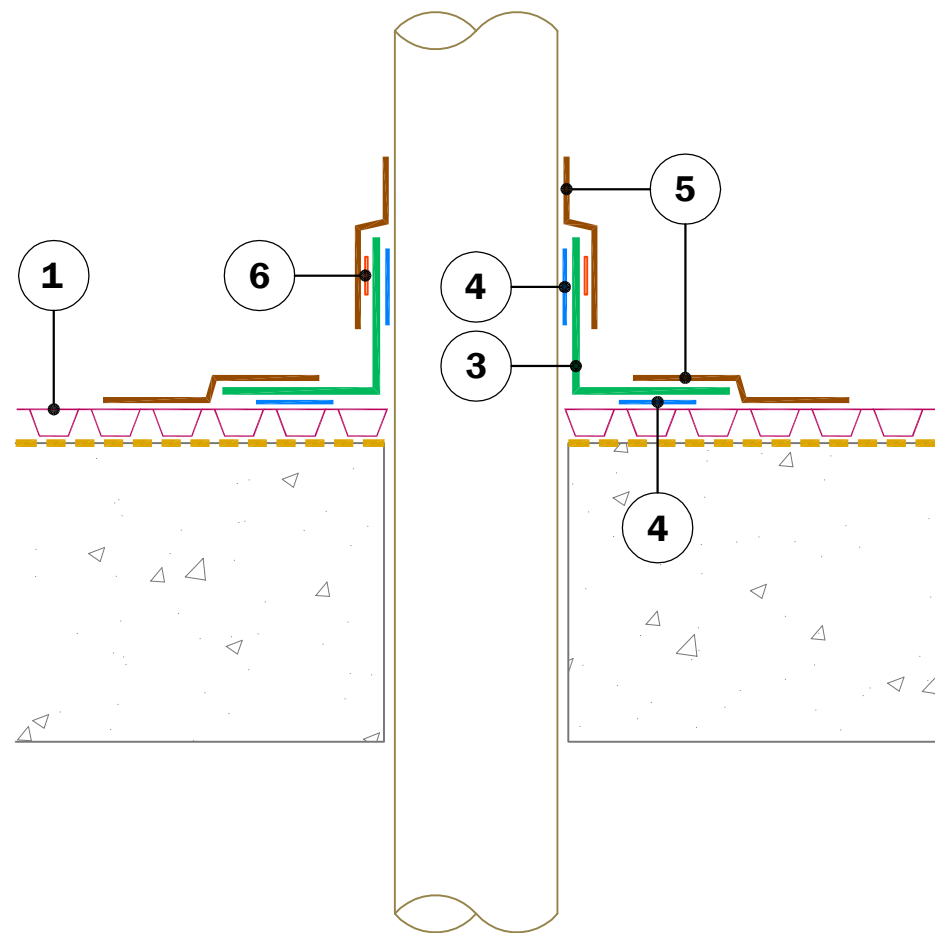
Site construction sequencing should be assessed before the appropriate Visqueen Standard Detail is selected & approved by the Designer.

In order to develop a robust design for protecting a structure against groundwater, a Risk Assessment must be carried out in line with the guidance given in BS8102:2009.

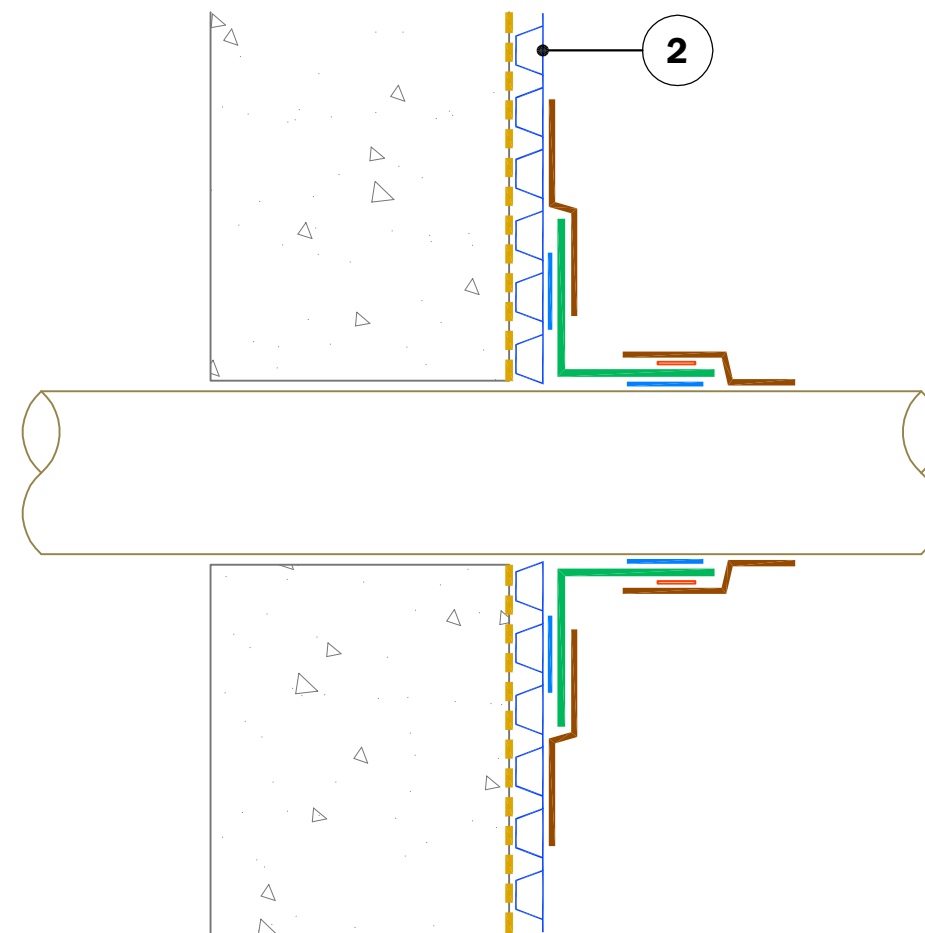
The Designer may need to specify one or a combination of waterproofing measures.

All Visqueen materials must be installed in strict accordance with the manufacturer's instructions. Refer to the current Visqueen datasheets.

Do Not Scale - Use Figured Dimensions Only.



Pipe Penetration Through RC Slab



Pipe Penetration Through RC Wall

Standard Detail



www.visqueen.com

Scale : NTS

Date : June.2020

Drawing No : NB-CD-14

VISQUEEN

CAVITY DRAIN MEMBRANE SYSTEM

Visqueen Cavity Drain Membrane System - New Build.

VISQUEEN
0333 202 6800
www.visqueen.com
enquiries@visqueen.com