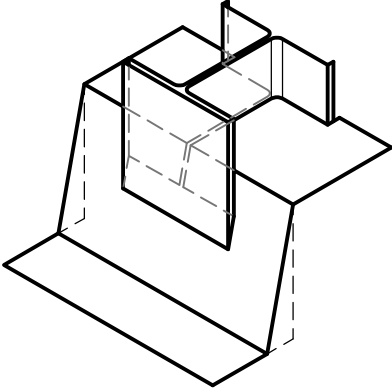
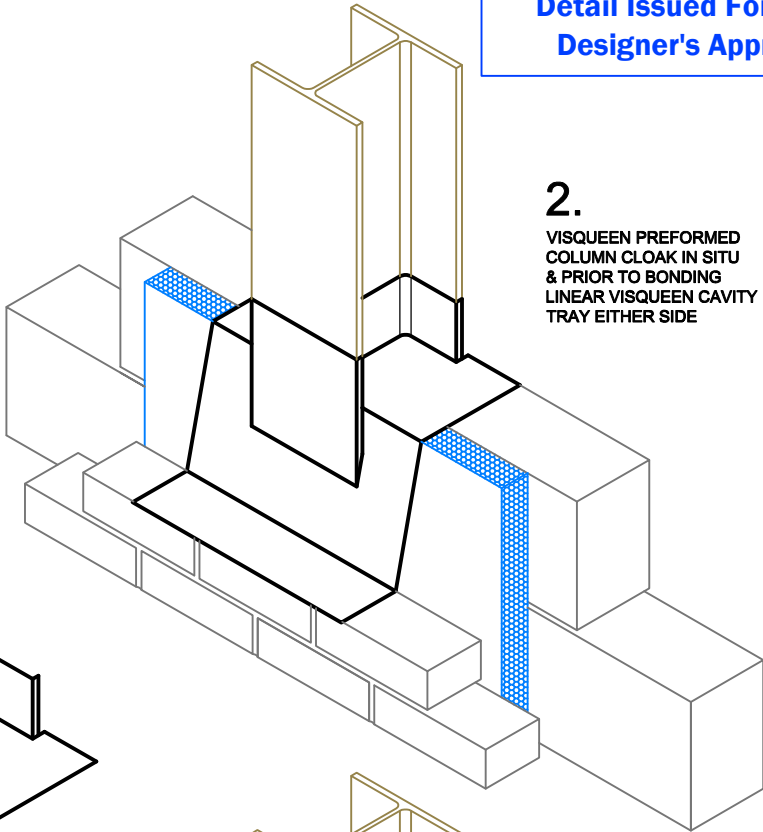


Detail Issued For Guidance Only,
Designer's Approval Required

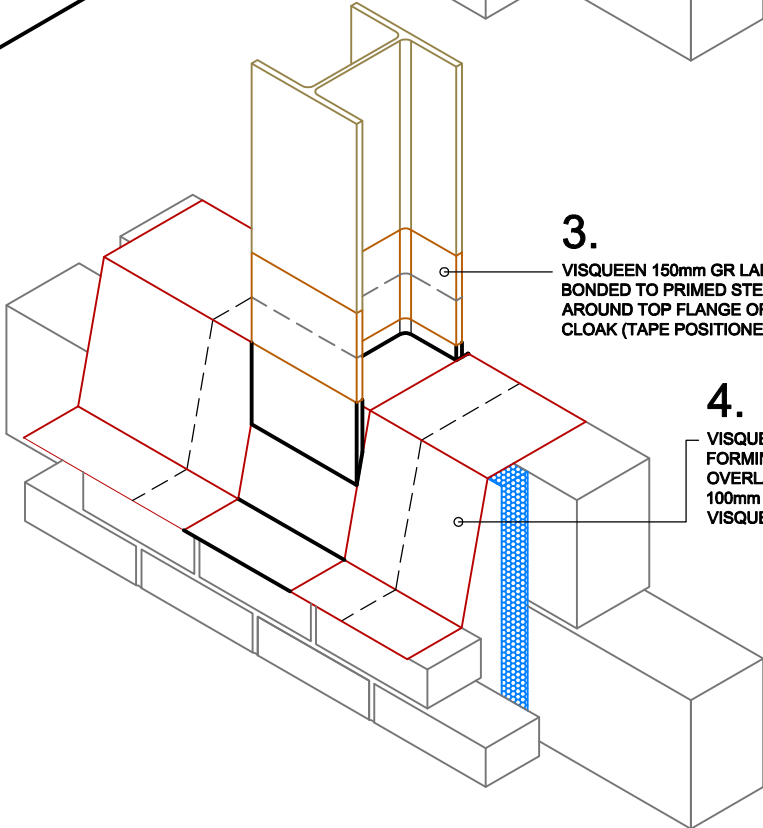
1.
VISQUEEN BESPOKE PREFORMED
COLUMN CLOAK (UNIT MAY BE
MANUFACTURED IN TWO PARTS)



2.
VISQUEEN PREFORMED
COLUMN CLOAK IN SITU
& PRIOR TO BONDING
LINEAR VISQUEEN CAVITY
TRAY EITHER SIDE



3.
VISQUEEN 150mm GR LAP TAPE
BONDED TO PRIMED STEEL &
AROUND TOP FLANGE OF PREFORMED
CLOAK (TAPE POSITIONED CENTRALLY)



4.
VISQUEEN FLEXIBLE SHEET DPC
FORMING THE CAVITY TRAY &
OVERLAPPED ONTO CLOAK BY
100mm & FULLY SEALED USING
VISQUEEN 100mm DOUBLE SIDED TAPE

NB; DO NOT SCALE - USE FIGURED DIMENSIONS ONLY.



Visqueen
Contact Technical Support :
t : 0333 202 6800
f : 0333 202 6886
e : enquiries@visqueen.com
www.visqueen.com

Project: Standard Detail : Web/Flange Column Cloak Sealing Method.

Drawing No.- PFU-523.	Date.- 12/18.	Scale.- NTS.	© COPYRIGHT RESERVED.
-----------------------	---------------	--------------	-----------------------