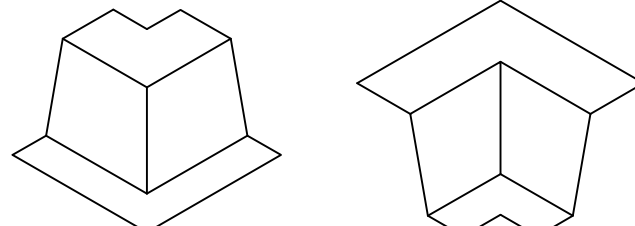
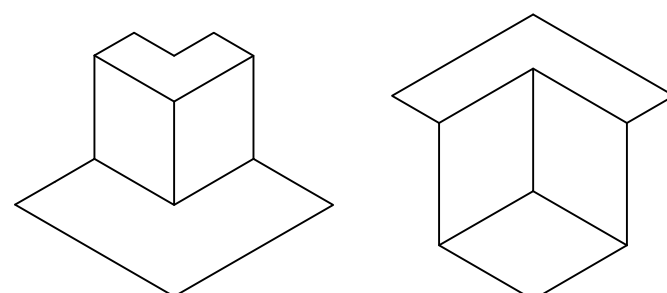
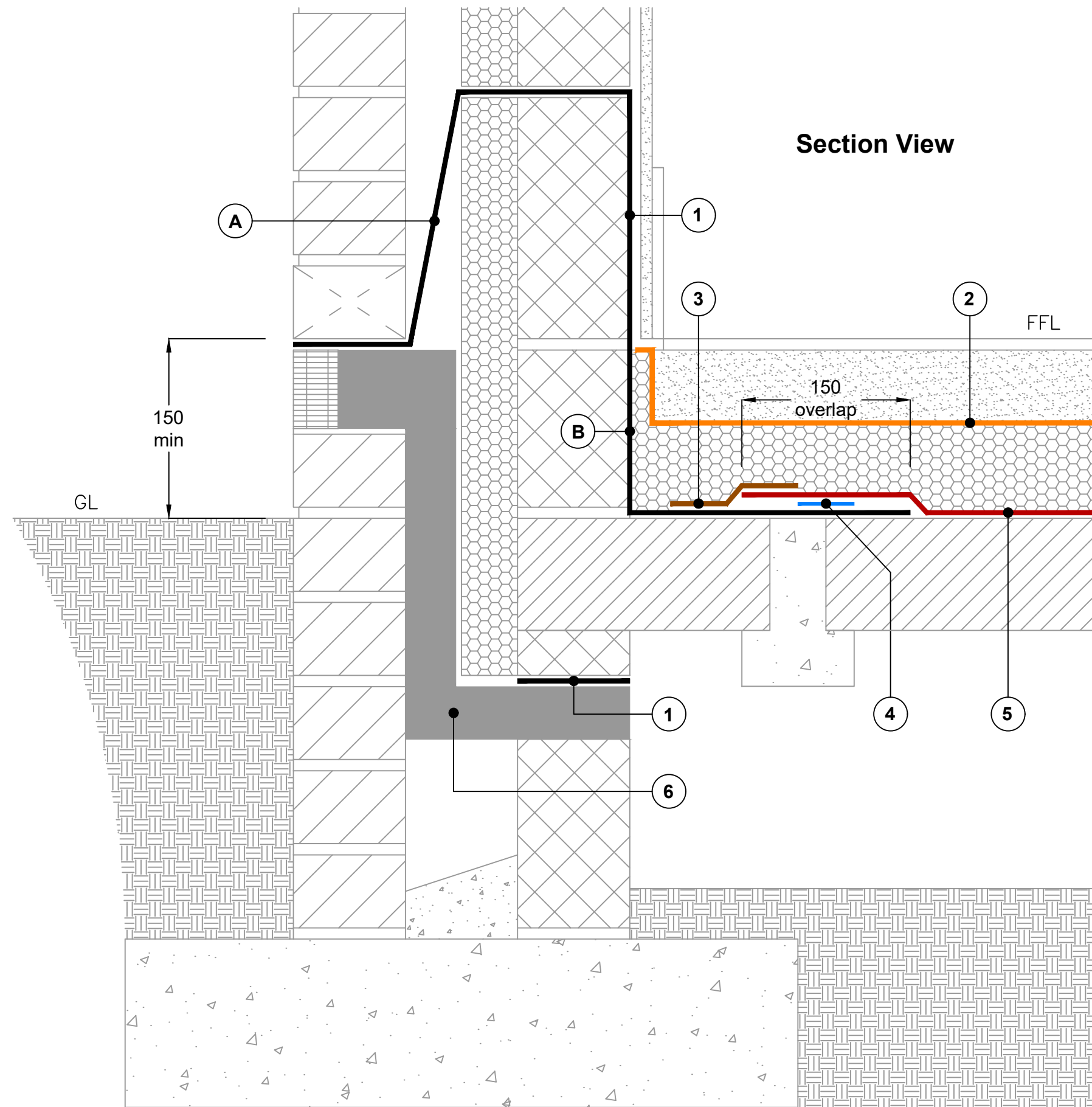


**Key to materials:**

1	Visqueen Zedex CPT High Performance Damp Proof Course
2	Visqueen Vapour Check or Visqueen Vapour Barrier
3	VisqueenPro Single Sided Tape
4	VisqueenPro Double Sided Jointing Tape
5	Visqueen Radon R400 Membrane
6	Visqueen Adjustable Z Vent and Airbrick
A	PFU-501 Preformed Units
	
B	PFU-553 Preformed Units
	



Visqueen Standard Details provide generic guidance only and designer's approval is required. These should not be used as construction drawings.

Site construction sequencing should be assessed before the appropriate Visqueen Standard Detail is selected and approved by the designer.

All Visqueen materials must be installed in strict accordance with the Visqueen product datasheets and applicable 3rd party certificates.

DPCs and DPC cavity trays to be installed in accordance with BS 8215:1991, PD 6697:2019 and BS 8000-3:2020.

Radon protection in accordance with national building regulations and BR211:2015.

Visqueen air and vapour control layers (AVCLs) should be installed in accordance with the recommendations of BS 5250:2021 Management of moisture in buildings - code of practice.

Ventilated air space depth and venting unit quantity as per national building regulations or specification requirements.

Skirting must be fixed with an adhesive and not mechanically fixed.

Visqueen Preformed Units are available to assist detailing at internal and external corners. See A and B on key to materials.

Drawing not to scale, use figured dimensions only. All figured dimensions are in millimetres.

**Standard Detail**



[www.visqueen.com](http://www.visqueen.com)

Date: Apr 2023

Drawing No: R400-03

Revision:      Drawn by: JR

Tel: 0333 202 6800  
enquiries@visqueen.com

© Copyright reserved. This drawing may not be reproduced or amended without prior written permission.



**MEMBRANE BELOW INSULATION, OPTION 3  
BEAM & BLOCK FLOOR & EXTERNAL MASONRY  
CAVITY WALL AT TELESCOPIC VENT LOCATION**