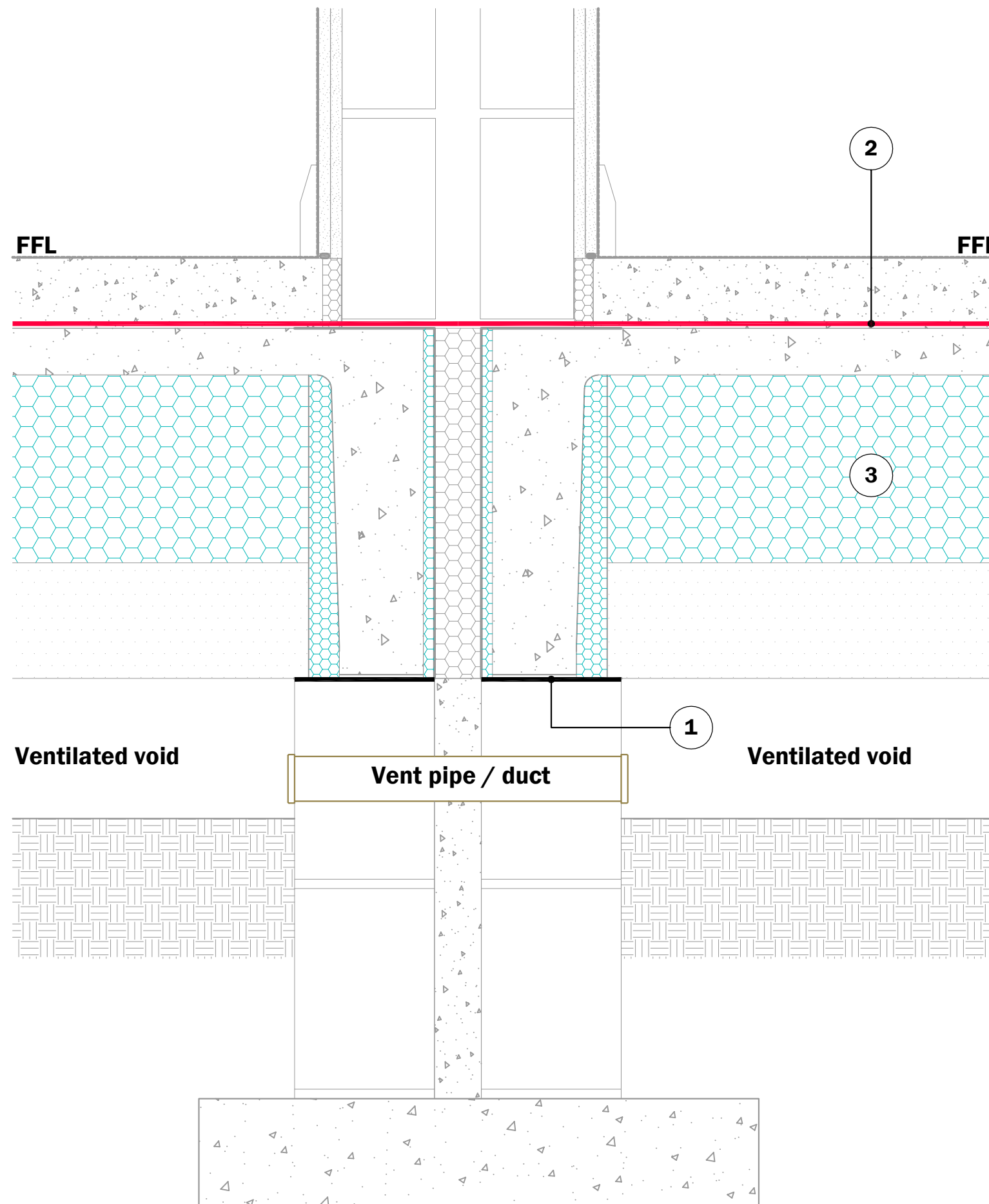


KEY TO MATERIALS :-

1	Visqueen Zedex CPT DPC.
2	Visqueen Ultimate RadonBlok 600 (supported across cavity on rigid insulation by others).
3	Spantherm insulated precast concrete floor system by others.



© Copyright reserved. This drawing may not be reproduced or amended without prior written permission.

Detail issued for Guidance Only. Designer's Approval Required.

Site construction sequencing should be assessed before the appropriate Visqueen Standard Detail is selected & approved by the Designer.

In order to develop a robust design for protecting a structure against groundwater, a Risk Assessment must be carried out in line with the guidance given in BS8102:2009.

The Designer may need to specify one or a combination of waterproofing measures.

All Visqueen materials must be installed in strict accordance with the manufacturer's instructions. Refer to the current Visqueen datasheets.

Do Not Scale - Use Figured Dimensions Only.

Standard Detail



www.visqueen.com

Scale : NTS

Date : Sept.2019

Drg No : SPAN-RADBLOK-IRL-08

VISQUEEN

**ULTIMATE
RADONBLOK⁶⁰⁰**

**Spantherm
Typical Internal Wall Detail - Masonry**

VISQUEEN
0333 202 6800
www.visqueen.com
enquiries@visqueen.com