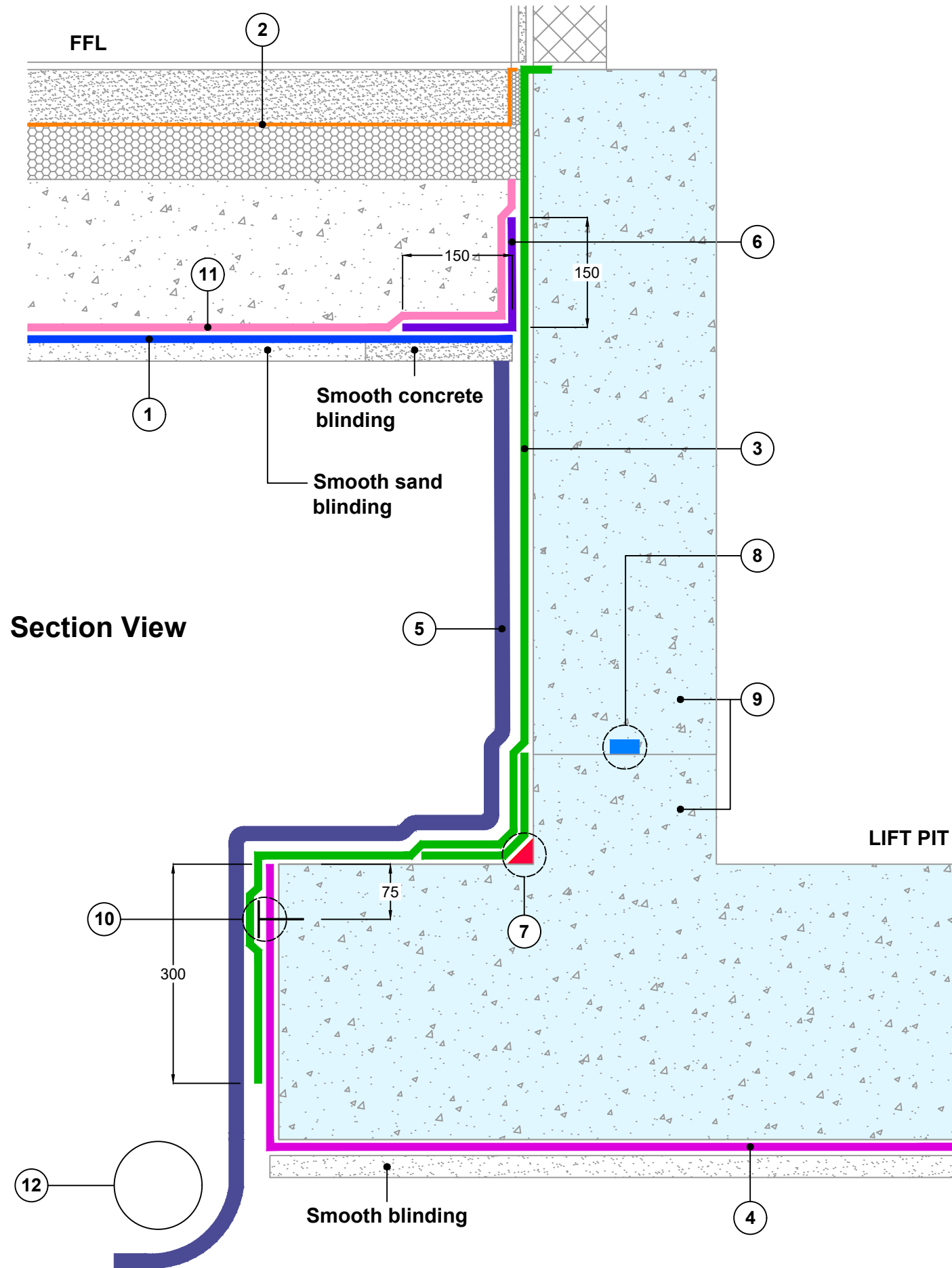


Key to materials:

1	Visqueen Gas Barrier
2	Visqueen Vapour Check or Visqueen Vapour Barrier
3	Visqueen Gas Resistant Self Adhesive Membrane on Visqueen HP Tanking Primer
4	Visqueen Ultimate Geoseal
5	Visqueen Protect&Drain, 12mm
6	VisqueenPro Detailing Strip
7	Visqueen Axiom UniSeal fillet, 35mm x 35mm
8	Visqueen IGW10 Waterstop bedded in Visqueen Waterstop Adhesive
9	Visqueen IGW Watertight Concrete
10	Visqueen Ultimate Retaining Discs at 400mm centres
11	Visqueen TreadGUARD
12	Maintainable land drain by others



Section View

Visqueen Standard Details provide generic guidance only and designer's approval is required. These should not be used as construction drawings. It is the designer's responsibility to develop final details suitable for individual buildings.

Site construction sequencing should be assessed before the appropriate Visqueen Standard Detail is selected and approved by the designer.

All Visqueen materials must be installed in strict accordance with the Visqueen product datasheets and applicable 3rd party certificates.

DPCs and DPC cavity trays to be installed in accordance with BS 8215:1991, PD 6697:2019 and BS 8000-3:2020.

Radon protection in accordance with national building regulations and BR211:2023.

Ground gas protection in accordance with BS 8485:2015 + A1:2019.

Further protection such as ventilation measures (not shown) may be necessary to meet the requirements of BS8485:2015+A1:2019.

Visqueen air and vapour control layers (AVCLs) should be installed in accordance with the recommendations of BS 5250:2021 Management of moisture in buildings - code of practice.

Drawing not to scale, use figured dimensions only. All figured dimensions are in millimetres.

Standard Detail



www.visqueen.com

Date: Jun 2023

Drawing No: SW-GB-01

Revision: Drawn by: JR

Tel: 0333 202 6800
enquiries@visqueen.com

© Copyright reserved. This drawing may not be reproduced or amended without prior written permission.



**BARRIER BELOW SLAB
CAST IN SITU RC GROUND BEARING SLAB &
LIFT PIT DETAIL, OPTION 1**