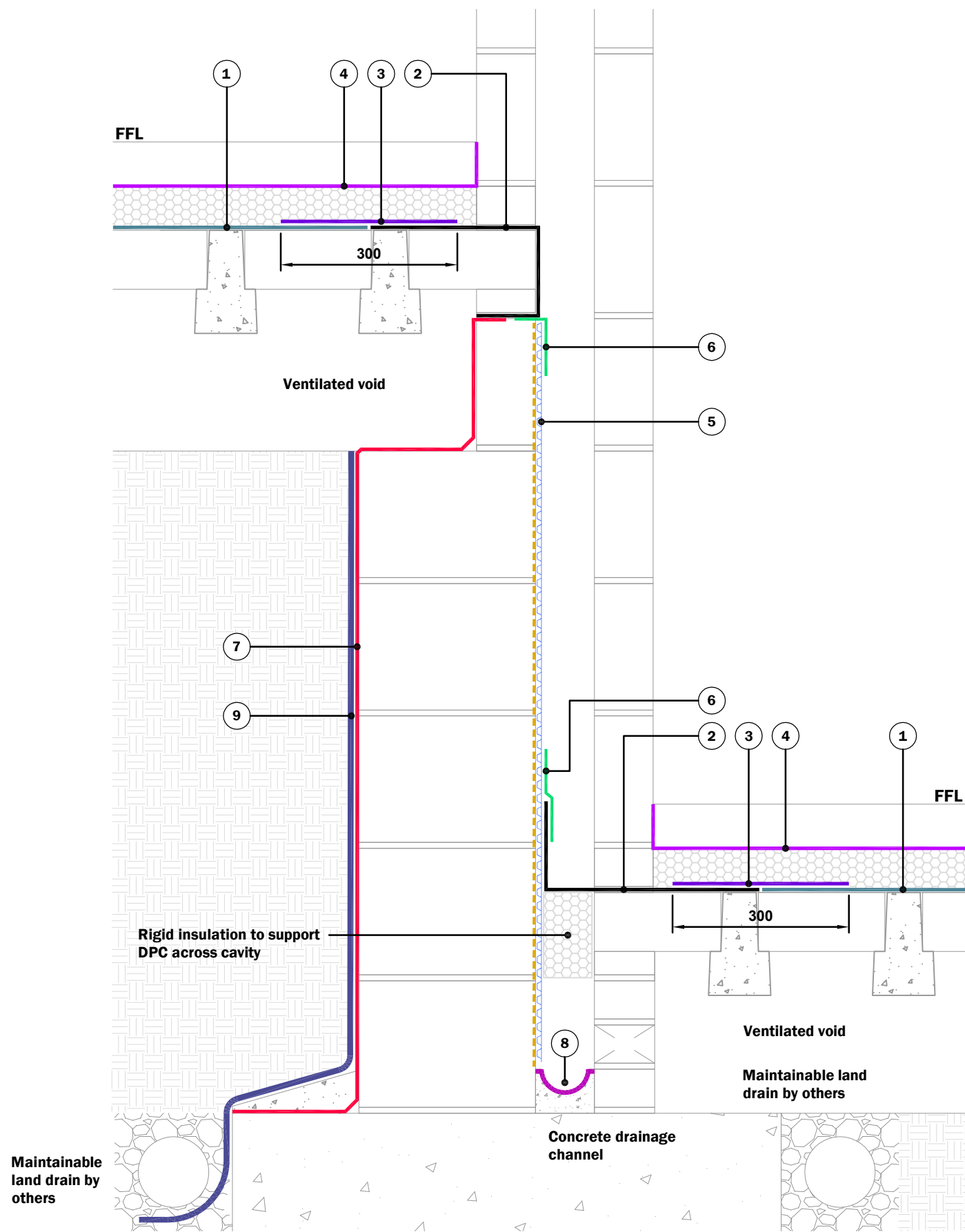


**KEY TO MATERIALS :-**

1	Visqueen HP DPM or Visqueen Radon R400 Membrane.
2	Visqueen Zedex CPT DPC.
3	Visqueen Pro 300mm Detailing Strip.
4	Visqueen Vapour Barrier.
5	Visqueen V8 Wall Membrane on Anti Lime Coating.
6	Visqueen CD 150mm Corner Strip.
7	Visqueen Axiom Guard on rendered substrate.
8	Visqueen Axiom UniSeal.
9	Visqueen Protect&Drain (12mm).



© Copyright reserved. This drawing may not be reproduced or amended without prior written permission.

Detail issued for guidance only. Designer's approval required.

Site construction sequencing should be assessed before the appropriate Visqueen Standard Detail is selected & approved by the Designer.

All Visqueen materials must be installed in strict accordance with the manufacturer's instructions. Refer to the current Visqueen datasheets.

DPCs and DPC cavity trays to be installed in accordance with BS8215:1991 and PD6697:2019.

Do not scale, use figured dimensions only. All figured dimensions are in mm.

**Standard Detail**



[www.visqueen.com](http://www.visqueen.com)

Scale : NTS

Date : June.2020

Drawing No : SW-NHBC-05



**Typical Detail - Suspended Floor.  
Step In Floor Level Between Units.**

**VISQUEEN**  
0333 202 6800  
[www.visqueen.com](http://www.visqueen.com)  
[enquiries@visqueen.com](mailto:enquiries@visqueen.com)