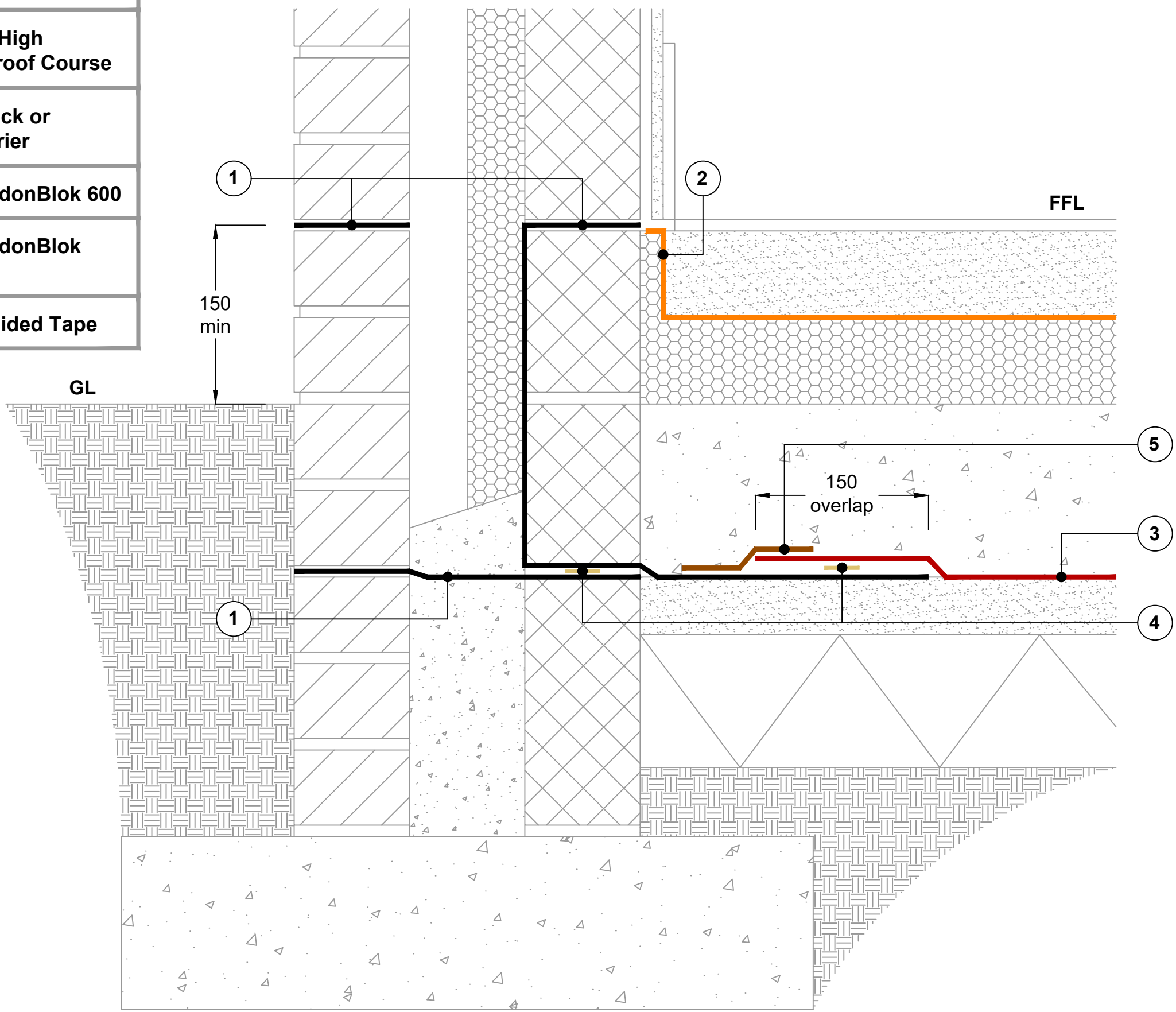


**Key to materials:**

1	Visqueen Zedex CPT High Performance Damp Proof Course
2	Visqueen Vapour Check or Visqueen Vapour Barrier
3	Visqueen Ultimate RadonBlok 600
4	Visqueen Ultimate RadonBlok Double Sided Tape
5	VisqueenPro Single Sided Tape



Visqueen Standard Details provide generic guidance only and designer's approval is required. These should not be used as construction drawings. It is the designer's responsibility to develop final details suitable for individual buildings.

Site construction sequencing should be assessed before the appropriate Visqueen Standard Detail is selected and approved by the designer.

All Visqueen materials must be installed in strict accordance with the Visqueen product datasheets and applicable 3rd party certificates.

DPCs and DPC cavity trays to be installed in accordance with BS 8215:1991, PD 6697:2019 and BS 8000-3:2020.

Visqueen air and vapour control layers (AVCLs) should be installed in accordance with the recommendations of BS 5250:2021 Management of moisture in buildings - code of practice.

Radon protection in accordance with national building regulations and BR211:2023.

In high radon risk locations e.g. full radon protection areas, a radon sump system will be required. Floor slab to be suspended. See URB600-42.

Drawing not to scale, use figured dimensions only. All figured dimensions are in millimetres.

**Standard Detail**



[www.visqueen.com](http://www.visqueen.com)

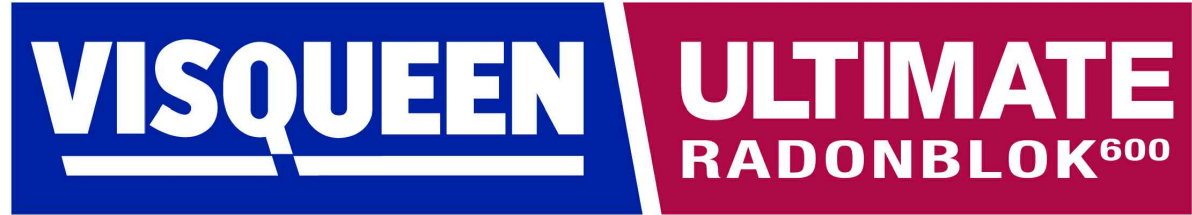
Date: Jun 2023

Drawing No: URB600-31

Revision:      Drawn by: JR

Tel: 0333 202 6800  
enquiries@visqueen.com

© Copyright reserved. This drawing may not be reproduced or amended without prior written permission.



**MEMBRANE BELOW SLAB  
CAST IN SITU RC GROUND BEARING SLAB &  
EXTERNAL MASONRY CAVITY WALL**